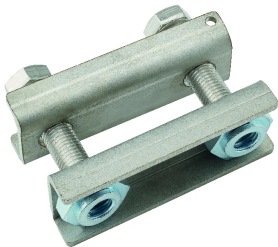


# FleXbus HCBC Clamp, 2.48" x 4.843"

## Data Solutions

### CATALOG NUMBER

**FLEXCLAMP63**



### CERTIFICATIONS



### FEATURES

Rigid design assures even contact pressure

Installs quickly and easily

Ideal for on-site modifications

Made with non-magnetic material stainless steel for high-current connections to prevent the formation of magnetic fields

Contains crimped self-locking nut for vibration resistance and easy installation

No drilling needed to fix the FleXbus Conductor on the transformer/power supply palm

Includes voltage detection connecting point

RoHS compliant

### PRODUCT ATTRIBUTES

Article Number: 508190

Material: Stainless Steel 304 (EN 1.4301)

A: 2.48in

B: 4.84in

C: 0.79in

D: 1.69in

Thickness (T): 0.16in

Hole Size (HS): 0.22in

Torque (TQ): 73.76ft·lbf

Unit Weight: 1.17lb

Conductor Width: 1.18 – 2.48in

## ADDITIONAL PRODUCT DETAILS

---

It is mandatory to use the HCBC Clamp associated with the HCBC Plate for proper Flexbus Conductor connection.

The minimum clearance distance is 14mm according to IEC 61439-1 with air pollution degree 3. If this distance cannot be respected, insulation material should be added between the metallic LV cover and the HCBC clamp. Flexbus IP2x Boots is also a solution.

If the Flexbus Conductors have a horizontal entry, an extender needs to be added between the power supply palm and HCBC Clamp and Plate.

## DIAGRAMS

---



## WARNING

---

nVent products shall be installed and used only as indicated in nVent's product instruction sheets and training materials. Instruction sheets are available at [www.nvent.com](http://www.nvent.com) and from your nVent customer service representative. Improper installation, misuse, misapplication or other failure to completely follow nVent's instructions and warnings may cause product malfunction, property damage, serious bodily injury and death and/or void your warranty.



Our powerful portfolio of brands:

**CADDY ERICO HOFFMAN ILSCO SCHROFF TRACHTE**