

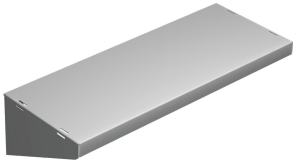
Shelf D-Box, 24.00x8.00, Lt Gray, Steel

Data Solutions

CATALOG NUMBER

DBSHELF8

The D-Box Shelves provide additional storage in 36- and 48-inch (914- and 1219-mm) tall cabinets. Please note the load raint is 75 lb. (34.0 kg)



FEATURES

The D-Box Shelves provide additional storage in 36- and 48-inch (914- and 1219-mm) tall cabinets

Please note the load raint is 75 lb. (34.0 kg)

PRODUCT ATTRIBUTES

Article Number: 14534

Material: Mild Steel

Finish: Powder Coated

Color: Light Gray

Color Code: RAL 7035

Thickness: 16ga

Length: 19.05in

Depth: 7.25in

Weight: 5lb

Fits Depth: 8in

WARNING

nVent products shall be installed and used only as indicated in nVent's product instruction sheets and training materials. Instruction sheets are available at www.nvent.com and from your nVent customer service representative. Improper installation, misuse, misapplication or other failure to completely follow nVent's instructions and warnings may cause product malfunction, property damage, serious bodily injury and death and/or void your warranty.



Our powerful portfolio of brands:

CADDY ERICO HOFFMAN ILSCO SCHROFF TRACHTE