

AccessPlus Double-Hinge Type 1 Window Gland, 48.00x28.31x25.10, Black, Steel

Data Solutions

CATALOG NUMBER

EWMWG482825



AccessPlus Cabinets provide security, equipment access, cooling and support for network and other 19-inch rack-mount equipment. The cabinet has three components: front door, center section and wall section.

INDUSTRY STANDARDS

UL 2416; Type 1; File No. E230874

cUL Listed per CSA C22.2 No. 182.4; File No. E230874

EIA 310-D

NEMA/EEMAC Type 1

EIC 60529 IP20

Per BICSI TDMM Tenth edition, Chapter 7,

Telecommunication Enclosures (TE)

FEATURES

Double-hinged for easy equipment access; center section provides 19-in. rack mounting per EIA universal spacing and is accessed through the front door or swing the center section away from the wall section for rear access

Front door has either a solid steel or hardened, tinted safety-glass window door for superior scratch resistance

Center section easily removed from rear section; tool-less one person installation possible

Self-grounding, plated steel rack angles fully adjustable within center section

Wall section provides cable entry and cable management with knockouts or gland plates

Gland plate model provides easy retrofit and fast installation and allows for pre-terminated cables or pre-wired patch panels; no need to re-terminate and test

Self-locking center-to-wall section latches in two locations

Front access to all latches (no exposed side latches); cabinet can be installed tightly in corners

Vented sides provide cross flow ventilation to improve heat dissipation

Vertical cable manager included in 28-in.-wide models

One set of plated, self-grounding, tapped 10-32 rack angles per EIA universal spacing standards, which can be adjusted front to-back, is provided with each center section of the cabinet; additional tapped- or square-hole rack angles can be

added to the cabinet to provide additional mounting

PRODUCT ATTRIBUTES

Article Number: 28607

Height (H): 48in

Width (W): 28.31in

Depth (D): 25.1in

Material: Mild Steel

Finish: Powder Coated

Color: Jet Black

Color Code: RAL 9005

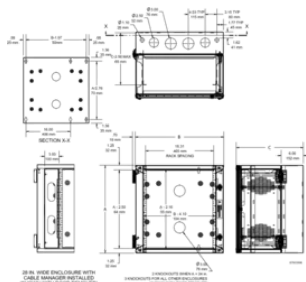
Thickness (T): 14ga

Rack Units: 26U

Load Capacity: 350lb

Weight: 85lb

DIAGRAMS



WARNING

nVent products shall be installed and used only as indicated in nVent's product instruction sheets and training materials. Instruction sheets are available at www.nvent.com and from your nVent customer service representative. Improper installation, misuse, misapplication or other failure to completely follow nVent's instructions and warnings may cause product malfunction, property damage, serious bodily injury and death and/or void your warranty.



Our powerful portfolio of brands:

CADDY ERICO HOFFMAN ILSCO SCHROFF TRACHTE