

# Multi Attachment

## Data Solutions



### CERTIFICATIONS



### FEATURES

Disperses load over two anchors

Minimizes the number of installed braces needed for concrete and wood structures

Ideal for deck installations

Use for both lateral and longitudinal sway brace applications

Meets NFPA®-13 requirements for seismic sway bracing

Meets CEN/TS 17551:2021 requirements for Seismic Sway Bracing

### SPECIFICATIONS

**Finish:** Electrogalvanized

**Material:** Steel

Table 1/1

Catalog Number	Hole Size 1 (HS1)	Hole Size 2 (HS2)	A	B	C	D

CSBMA050050 EG	0.5625in	0.5625in	12in	2.5in	2.5in	9in
CSBMA050075 EG	0.8125in	0.5625in	12in	2.5in	2.5in	9in

## ADDITIONAL PRODUCT DETAILS

Mount to structure using holes indicated in HS1.

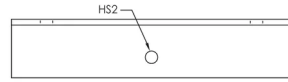
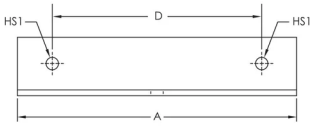
Structure Attachment and Brace Member are not included.

UL Loads			
Part Number	Structure Attachment Fitting	Brace Member	Load Rating
CSBMA050050	CSBU1	1" - 2" Sch. 40 NPS	680 lb
	CSBUNIV050	1" - 2" Sch. 40 NPS	680 lb
	CSBURC12	CSB12CBL	418 lb
		CSB18CBL	772 lb
		CSB36CBL	1100 lb
	CSBNPC12	CSB12CBL	418 lb
		CSB18CBL	772 lb
		CSB36CBL	1300 lb
	CSBMA050075	CSBU1	1" - 2" Sch. 40 NPS
CSBUNIV050		1" - 2" Sch. 40 NPS	680 lb
CSBURC12		CSB12CBL	418 lb
		CSB18CBL	772 lb
		CSB36CBL	1100 lb
CSBNPC12		CSB12CBL	418 lb
		CSB18CBL	772 lb
		CSB36CBL	1300 lb

FM Loads				
Part Number	Horizontal Capacity per Installation Angle from Vertical			
	30° - 44°	45° - 59°	60° - 74°	75° - 90°
CSBMA050050EG	3,290 lb	4,520 lb	5,540 lb	6,200 lb
CSBMA050075EG	3,290 lb	4,520 lb	5,540 lb	6,200 lb

## DIAGRAMS

---



## WARNING

---

nVent products shall be installed and used only as indicated in nVent's product instruction sheets and training materials. Instruction sheets are available at [www.nvent.com](http://www.nvent.com) and from your nVent customer service representative. Improper installation, misuse, misapplication or other failure to completely follow nVent's instructions and warnings may cause product malfunction, property damage, serious bodily injury and death and/or void your warranty.



Our powerful portfolio of brands:

**CADDY   ERICO   HOFFMAN   ILSCO   SCHROFF   TRACHTE**