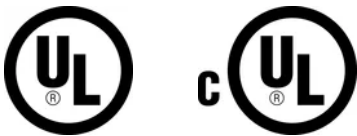


Telecom Main Grounding Busbar

Data Solutions



CERTIFICATIONS



FEATURES

Meets TIA-607-C and TIA-607-D and conforms to BICSI® recommendations

Complies with NEMA® standards

Accepts two hole lugs with 5/16" or 7/16" bolt holes (hardware not included)

Telecom grounding busbar splice kits are available to extend the length of the busbar

SPECIFICATIONS

- Thickness (T):** 0.25in
- Width (W):** 4in
- Material:** Copper

Table 1/3

Catalog Number	Tin Plating	Length 1 (L1)	Length 2 (L2)	Hole Size 1 (HS1)	Hole Size 1 (HS1)	Hole Size 1 Number of Pairs

TMGBA29L41P	No	29in	18in	0.3125in	0.3125in	41
TMGBA20L27P T	Yes	20in	9in	0.3125in	0.3125in	27
TMGBA12L15P	No	12in	9in	0.3125in	0.3125in	15
TMGBA29L41P T	Yes	29in	18in	0.3125in	0.3125in	41
TMGBA18L23P	No	17.75in	9in	0.3125in	0.3125in	23
TMGBA12L15P T	Yes	12in	9in	0.3125in	0.3125in	15
TMGBA16L19P	No	15.5in	9in	0.3125in	0.3125in	19
TMGBA18L23P T	Yes	17.75in	9in	0.3125in	0.3125in	23
TMGBA24L33P	No	24in	18in	0.3125in	0.3125in	33
TMGBA16L19P T	Yes	15.5in	9in	0.3125in	0.3125in	19
TMGBA24L33P T	Yes	24in	18in	0.3125in	0.3125in	33
TMGBA20L27P	No	20in	9in	0.3125in	0.3125in	27

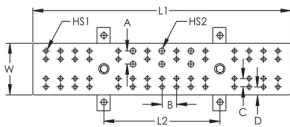
Table 2/3

Catalog Number	Hole Size 2 (HS2)	Hole Size 2 (HS2)	Hole Size 2 Number of Pairs	A	B	C
TMGBA29L41P	0.4375in	0.4375in	5	1in	1.125in	0.625in
TMGBA20L27P T	0.4375in	0.4375in	3	1in	1.125in	0.625in
TMGBA12L15P	0.4375in	0.4375in	3	1in	1.125in	0.625in
TMGBA29L41P T	0.4375in	0.4375in	5	1in	1.125in	0.625in
TMGBA18L23P	0.4375in	0.4375in	3	1in	1.125in	0.625in
TMGBA12L15P T	0.4375in	0.4375in	3	1in	1.125in	0.625in
TMGBA16L19P	0.4375in	0.4375in	3	1in	1.125in	0.625in
TMGBA18L23P T	0.4375in	0.4375in	3	1in	1.125in	0.625in
TMGBA24L33P	0.4375in	0.4375in	5	1in	1.125in	0.625in
TMGBA16L19P T	0.4375in	0.4375in	3	1in	1.125in	0.625in
TMGBA24L33P T	0.4375in	0.4375in	5	1in	1.125in	0.625in
TMGBA20L27P	0.4375in	0.4375in	3	1in	1.125in	0.625in

Table 3/3

Catalog Number	D
TMGBA29L41P	0.625in
TMGBA20L27PT	0.625in
TMGBA12L15P	0.625in
TMGBA29L41PT	0.625in
TMGBA18L23P	0.625in
TMGBA12L15PT	0.625in
TMGBA16L19P	0.625in
TMGBA18L23PT	0.625in
TMGBA24L33P	0.625in
TMGBA16L19PT	0.625in
TMGBA24L33PT	0.625in
TMGBA20L27P	0.625in

DIAGRAMS



WARNING

nVent products shall be installed and used only as indicated in nVent's product instruction sheets and training materials. Instruction sheets are available at www.nvent.com and from your nVent customer service representative. Improper installation, misuse, misapplication or other failure to completely follow nVent's instructions and warnings may cause product malfunction, property damage, serious bodily injury and death and/or void your warranty.



Our powerful portfolio of brands:

CADDY ERICO HOFFMAN ILSCO SCHROFF TRACHTE