

# Compression 90° Angle Lug



## FEATURES

Tin plated for corrosion prevention

Annealed copper eases the crimping operation

Optimized sizes to the most efficient electrical conductivity

Best mechanical behavior (vibration/pull-out); DIN EN 61373 Class 1B "Railway Applications"

Markings on barrel for crimping

Consistent material thickness, precise diameter and accurate cable fit; DIN46235

Flat contact surface by special angle punching process

## SPECIFICATIONS

**Angle (a):** 90 °

**Material:** Copper

**Finish:** Tinned

Table 1/2

Catalog Number	Lug/Connector Type	Conductor Size	Hole Size (HS)	Height (H)	Length (L)	Width (W)
RKS1201290T	Standard	120 mm <sup>2</sup> Stranded, 250 kcmil Stranded	0.51"	1"	1.9"	1.1"
PKS1501290H	Heavy-Duty DIN46235	150 mm <sup>2</sup> Stranded, 300 kcmil Stranded	0.51"	1.4"	2"	1.3"

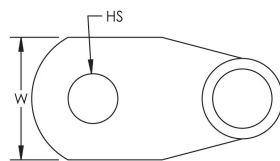
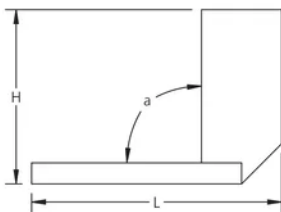
Catalog Number	Lug/Connector Type	Conductor Size	Hole Size (HS)	Height (H)	Length (L)	Width (W)
RKS1851290T	Standard	185 mm <sup>2</sup> Stranded, 350 kcmil Stranded	0.51"	1.2"	2.4"	1.4"
PKS1851290H	Heavy-Duty DIN46235	185 mm <sup>2</sup> Stranded, 350 kcmil Stranded	0.51"	1.6"	2.3"	1 1/2"
RKS2401290T	Standard	240 mm <sup>2</sup> Stranded, 500 kcmil Stranded	0.51"	1.4"	2.6"	1 1/2"
RKS1501290T	Standard	150 mm <sup>2</sup> Stranded, 300 kcmil Stranded	0.51"	1.2"	2"	1.2"
RKS4001290	Standard	400 mm <sup>2</sup> Stranded, 800 kcmil Stranded	0.51"	1.7"	3"	1.9"
PKS1201290H	Heavy-Duty DIN46235	120 mm <sup>2</sup> Stranded, 250 kcmil Stranded	0.51"	1.4"	2"	1.3"
PKS1501690H	Heavy-Duty DIN46235	150 mm <sup>2</sup> Stranded, 300 kcmil Stranded	0.59"	1.4"	2.3"	1.3"
RKS1201690	Standard	120 mm <sup>2</sup> Stranded, 250 kcmil Stranded	0.59"	1"	2"	1.1"
PKS2401690H	Heavy-Duty DIN46235	240 mm <sup>2</sup> Stranded, 500 kcmil Stranded	0.59"	1.6"	2.6"	1.7"
PKS1201690H	Heavy-Duty DIN46235	120 mm <sup>2</sup> Stranded, 250 kcmil Stranded	0.59"	1.4"	2.2"	1.3"
RKS3001690	Standard	300 mm <sup>2</sup> Stranded, 600 kcmil Stranded	0.59"	1.7"	2.9"	1.7"
RKS1501690	Standard	150 mm <sup>2</sup> Stranded, 300 kcmil Stranded	0.59"	1.2"	2.1"	1.2"
RKS1851690	Standard	185 mm <sup>2</sup> Stranded, 350 kcmil Stranded	0.59"	1.2"	2.4"	1.4"
RKS4001690	Standard	400 mm <sup>2</sup> Stranded, 800 kcmil Stranded	0.59"	1.7"	3"	1.9"

Catalog Number	Lug/Connector Type	Conductor Size	Hole Size (HS)	Height (H)	Length (L)	Width (W)
PKS1851690H	Heavy-Duty DIN46235	185 mm <sup>2</sup> Stranded, 350 kcmil Stranded	0.59"	1.6"	2.4"	1 1/2"
RKS2401690	Standard	240 mm <sup>2</sup> Stranded, 500 kcmil Stranded	0.59"	1.4"	2.6"	1 1/2"

Table 2/2

Catalog Number	Tool/Die Type
RKS1201290T	M2M or M2H/RKM2, M3H or M3B/RKM3, MLB/RKML
PKS1501290H	M2M or M2H/PKM2, M3H or M3B/PKM3, MLB/PKML
RKS1851290T	M2M or M2H/RKM2, M3H or M3B/RKM3, MLB/RKML
PKS1851290H	M2M or M2H/PKM2, M3H or M3B/PKM3, MLB/PKML
RKS2401290T	M2M or M2H/RKM2, M3H or M3B/RKM3, MLB/RKML
RKS1501290T	M2M or M2H/RKM2, M3H or M3B/RKM3, MLB/RKML
RKS4001290	M3H or M3B/RKM3
PKS1201290H	M2M or M2H/PKM2, M3H or M3B/PKM3, MLB/PKML
PKS1501690H	M2M or M2H/PKM2, M3H or M3B/PKM3, MLB/PKML
RKS1201690	M2M or M2H/RKM2, M3H or M3B/RKM3, MLB/RKML
PKS2401690H	M2M or M2H/PKM2, M3H or M3B/PKM3
PKS1201690H	M2M or M2H/PKM2, M3H or M3B/PKM3, MLB/PKML
RKS3001690	M2M or M2H/RKM2, M3H or M3B/RKM3
RKS1501690	M2M or M2H/RKM2, M3H or M3B/RKM3, MLB/RKML
RKS1851690	M2M or M2H/RKM2, M3H or M3B/RKM3, MLB/RKML
RKS4001690	M3H or M3B/RKM3
PKS1851690H	M2M or M2H/PKM2, M3H or M3B/PKM3, MLB/PKML
RKS2401690	M2M or M2H/RKM2, M3H or M3B/RKM3, MLB/RKML

## DIAGRAMS



## WARNING

---

nVent products shall be installed and used only as indicated in nVent's product instruction sheets and training materials. Instruction sheets are available at [www.nvent.com](http://www.nvent.com) and from your nVent customer service representative. Improper installation, misuse, misapplication or other failure to completely follow nVent's instructions and warnings may cause product malfunction, property damage, serious bodily injury and death and/or void your warranty.

### North America

+1.800.753.9221

Option 1 – Customer Care

Option 2 – Technical

Support

### Europe

Netherlands:

+31 800-0200135

France:

+33 800 901 793

### Europe

Germany:

800 1890272

Other Countries:

+31 13 5835404

### APAC

Shanghai:

+ 86 21 2412 1618/19

Sydney:

+61 2 9751 8500



Our powerful portfolio of brands:

**CADDY**

**ERICO**

**HOFFMAN**

**ILSCO**

**SCHROFF**

**TRACHTE**