

## Flush-Mount Door Frames for Pull Box



Flush-Mount Door Frames are used in Screw-Cover Pull Boxes for telephone cabinet installations, in communication wiring and signal systems, or as a junction or pull box and switch enclosure.

### FEATURES

---

Continuous hinge on door

Rugged black composite slide latch

Optional tamper-resistant lock kit includes cylinder lock, tamper-resistant screws and special driver bit

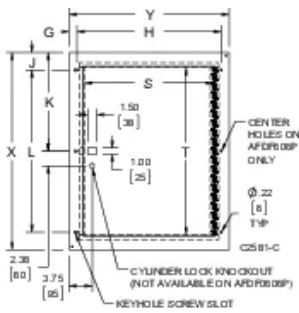
## SPECIFICATIONS

<b>Color Code:</b>	ANSI 61
<b>Color:</b>	Gray
<b>Material:</b>	Mild Steel
<b>Finish:</b>	Powder Coated

Table 1/1

Catalog Number	Article Number	Height (H)	Width (W)	Thickness (T)	Door Size (T)	Door Size (S)
AFDF1818P	42950	20in	20in	14ga	15in	15in
AFDF1812P	42940	20in	14in	14ga	15in	9in
AFDF2418P	42960	26in	20in	14ga	21in	15in
AFDF3024P	42980	32in	26in	14ga	27in	21in
AFDF1212P	42930	14in	14in	14ga	9in	9in
AFDF2424P	42970	26in	26in	14ga	21in	21in
AFDF0606P	43630	8in	8in	14ga	3in	3in

## DIAGRAMS



## WARNING

nVent products shall be installed and used only as indicated in nVent's product instruction sheets and training materials. Instruction sheets are available at [www.nvent.com](http://www.nvent.com) and from your nVent customer service representative. Improper installation, misuse, misapplication or other failure to completely follow nVent's instructions and warnings may cause product malfunction, property damage, serious bodily injury and death and/or void your warranty.



Our powerful portfolio of brands:

**CADDY ERICO HOFFMAN ILSCO SCHROFF TRACHTE**