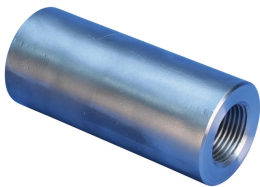


S13 Metric Parallel Bolt Coupler, Plain, Worldwide Design, 25 mm, #8, 25M, 1.75" dia, 2.4", M30 Thread

CATALOG NUMBER

EL25S13



FEATURES

Provides continuity between reinforcing bar and ISO® 965 metric all-thread rod or bolts

May be used to anchor load-bearing equipment to foundations, columns or walls

Machined from non-weldable grades of material, but can be tack welded

PRODUCT ATTRIBUTES

Material: Steel

Finish: Plain

100% U.S. Domestic Content: Yes

Design Version: Worldwide (Globally Available Materials)

Rebar Size, US: #8

Rebar Size, Canada: 25M

Diameter (Ø): 1.75"

Length (L): 4.31"

A: 2.4"

Bar Depth (BD): 1.57"

Thread Size (TS): M30

Thread Depth (TD): 1.32"

Unit Weight: 2.9 lb

Designed to Meet: AASHTO;ABNT NBR 8548:1984;ACI 318 Type 1 (125% Specified Yield);ACI 318 Type 2 (Specified Tensile);ACI 349;ACI 359;AS3600

Package Quantity: 28

ADDITIONAL PRODUCT DETAILS

Bar dimensions and weights listed may vary by region. Coupler sizes not shown may be available by special order. Contact your nVent LENTON representative for more information.

Coupler supplied without bolt.

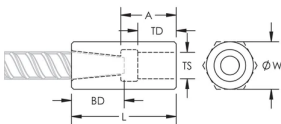
Bolt may be replaced by threaded rod of same class/grade.

All calculations based on a minimum bolt engagement equal to Thread Depth (TD).

System Capacity based on bolt to coupler connection. For rebar to coupler connection, refer to applicable building codes and approvals or contact your nVent LENTON representative.

| Bolt-to-Coupler Capacity (lb f) | | | | | |
|---------------------------------|-----------|-----------|-----------|------------|------------|
| Part Number | Grade 4.8 | Grade 5.8 | Grade 8.8 | Grade 10.9 | Grade 12.9 |
| EL22S13 | 41,311 | 51,639 | 82,623 | 101,132 | 101,132 |
| EL25S13 | 50,410 | 63,013 | 100,820 | 126,013 | 126,013 |
| EL28S13 | 62,367 | 77,959 | 124,734 | 139,644 | 139,644 |
| EL32S13 | 87,743 | 109,679 | 175,486 | 176,215 | 176,215 |

DIAGRAMS



WARNING

nVent products shall be installed and used only as indicated in nVent's product instruction sheets and training materials. Instruction sheets are available at www.nvent.com and from your nVent customer service representative. Improper installation, misuse, misapplication or other failure to completely follow nVent's instructions and warnings may cause product malfunction, property damage, serious bodily injury and death and/or void your warranty.

North America

+1.800.753.9221

Option 1 – Customer Care

Option 2 – Technical

Support

Europe

Netherlands:

+31 800-0200135

France:

+33 800 901 793

Europe

Germany:

800 1890272

Other Countries:

+31 13 5835404

APAC

Shanghai:

+ 86 21 2412 1618/19

Sydney:

+61 2 9751 8500



Our powerful portfolio of brands:

CADDY

ERICO

HOFFMAN

ILSCO

SCHROFF

TRACHTE