

# S5 Imperial UN Parallel Bolt Coupler, Plain, 32 mm, #10, 1 1/4 UN Thread

## CATALOG NUMBER

**EL32S5B**



## FEATURES

Provides continuity between reinforcing bar and imperial UN all-thread rod or bolts

May be used to anchor load-bearing equipment to foundations, columns or walls

Machined from non-weldable grades of material, but can be tack welded

## PRODUCT ATTRIBUTES

Material: Steel

Finish: Plain

100% U.S. Domestic Content: Yes

Rebar Size, US: #10

Diameter (Ø): 1.88"

Length (L): 4.55"

A: 2.63"

Bar Depth (BD): 1.58"

Thread Size (TS): 1 1/4" UN

Thread Depth (TD): 1.88"

Unit Weight: 4.5 lb

Designed to Meet: AASHTO; ABNT NBR 8548:1984; ACI 318 Type 1 (125% Specified Yield); ACI 318 Type 2 (Specified Tensile); ACI 349; ACI 359; AS3600

## ADDITIONAL PRODUCT DETAILS

Bar dimensions and weights listed may vary by region. Coupler sizes not shown may be available by special order. Contact your nVent LENTON representative for more information.

Coupler supplied without bolt.

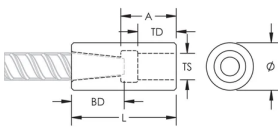
Bolt may be replaced by threaded rod of same class/grade.

All calculations based on a minimum bolt engagement equal to Thread Depth (TD).

System Capacity based on bolt to coupler connection. For rebar to coupler connection, refer to applicable building codes and approvals or contact your nVent LENTON representative.

| Bolt-to-Coupler Capacity |             |             |             |
|--------------------------|-------------|-------------|-------------|
| Part Number              | Grade 2     | Grade 5     | Grade 8     |
| EL25S5                   | 47,427 lbs  | 94,855 lbs  | 118,568 lbs |
| EL28S5                   | 59,982 lbs  | 119,965 lbs | 143,220 lbs |
| EL32S5A                  | 89,511 lbs  | 179,021 lbs | 206,473 lbs |
| EL32S5B                  | 59,982 lbs  | 119,965 lbs | 143,220 lbs |
| EL36S5                   | 124,929 lbs | 232,146 lbs | 232,146 lbs |
| EL36S5A                  | 74,010 lbs  | 148,020 lbs | 149,029 lbs |
| EL43TS5                  | 166,239 lbs | 332,477 lbs | 371,623 lbs |
| EL57TS5                  | 266,528 lbs | 533,057 lbs | 586,526 lbs |
| EL57TS5A                 | 213,438 lbs | 426,876 lbs | 453,009 lbs |

## DIAGRAMS



## WARNING

nVent products shall be installed and used only as indicated in nVent's product instruction sheets and training materials. Instruction sheets are available at [www.nvent.com](http://www.nvent.com) and from your nVent customer service representative. Improper installation, misuse, misapplication or other failure to completely follow nVent's instructions and warnings may cause product malfunction, property damage, serious bodily injury and death and/or void your warranty.

**North America**

+1.800.753.9221

Option 1 – Customer Care

Option 2 – Technical

Support

**Europe**

Netherlands:

+31 800-0200135

France:

+33 800 901 793

**Europe**

Germany:

800 1890272

Other Countries:

+31 13 5835404

**APAC**

Shanghai:

+ 86 21 2412 1618/19

Sydney:

+61 2 9751 8500



Our powerful portfolio of brands:

**CADDY**

**ERICO**

**HOFFMAN**

**ILSCO**

**SCHROFF**

**TRACHTE**