

# A22 Standard Coupler, High Strength, Plain, 43 mm, #14, 45M

## CATALOG NUMBER

**EL43TA22**



The A22 family of standard couplers is designed for use on ASTM A615 grade 100 (700MPa) reinforcing steel. The performance of the spliced connection is designed to meet the bars' specified ultimate tensile strength of 115ksi (792MPa).

## FEATURES

Designed to splice the same diameter bars where one bar can be rotated and the bar is not restricted in its axial direction

Slim design reduces concrete cover

Installs quickly and easily

## PRODUCT ATTRIBUTES

Material: Steel

Finish: Plain

100% U.S. Domestic Content: Yes

Rebar Size, US: #14

Rebar Size, Canada: 45M

Diameter (Ø): 2.5"

Length (L): 6.22"

Bar Depth (BD): 2.6"

Bar Gap (BG): 1.02"

Unit Weight: 5.4 lb

Designed to Meet: AASHTO; ABNT NBR 8548:1984; ACI 318 Type 1 (125% Specified Yield); ACI 318 Type 2 (Specified Tensile); ACI 349; ACI 359; AS3600

Package Quantity: 8

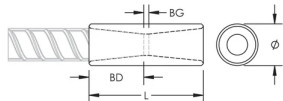
## ADDITIONAL PRODUCT DETAILS

---

Bar dimensions and weights listed may vary by region. Coupler sizes not shown may be available by special order. Contact your nVent LENTON representative for more information.

## DIAGRAMS

---



## WARNING

---

nVent products shall be installed and used only as indicated in nVent's product instruction sheets and training materials. Instruction sheets are available at [www.nvent.com](http://www.nvent.com) and from your nVent customer service representative. Improper installation, misuse, misapplication or other failure to completely follow nVent's instructions and warnings may cause product malfunction, property damage, serious bodily injury and death and/or void your warranty.

### North America

+1.800.753.9221

Option 1 – Customer Care

Option 2 – Technical

Support

### Europe

Netherlands:

+31 800-0200135

France:

+33 800 901 793

### Europe

Germany:

800 1890272

Other Countries:

+31 13 5835404

### APAC

Shanghai:

+ 86 21 2412 1618/19

Sydney:

+61 2 9751 8500



Our powerful portfolio of brands:

**CADDY**

**ERICO**

**HOFFMAN**

**ILSCO**

**SCHROFF**

**TRACHTE**