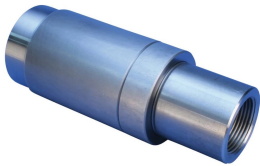


P9 Position Coupler for Nuclear Applications, 43 mm, #14, 45M

CATALOG NUMBER

EL43TP9Q



The nuclear industry demands scrutiny throughout the entire product life-cycle. nVent LENTON products produced under nVent's nuclear quality systems receive the utmost attention to detail and can meet the high demands of the nuclear industry. These quality systems are designed to include compliance to ASME NCA-3800 (ERICO - QSC 595), NQA-1, 10CFR50 Appendix B, 10CFR 50.55(e), 10CFR Part 21 and USNRC Regulatory Guide 1.28. nVent LENTON products produced for nuclear applications are assigned unique part numbers to ensure detailed product documentation and full product traceability in accordance with demanding industry expectations.

FEATURES

Designed to splice the same diameter bars

Designed to splice two curved, bent or straight bars, when neither bar can be rotated and where the ongoing bar is NOT free to move in its axial direction

PRODUCT ATTRIBUTES

Material: Steel

Finish: Plain

100% U.S. Domestic Content: Yes

Rebar Size, US: #14

Rebar Size, Canada: 45M

Diameter (Ø): 3"

Length 1 (L1): 8.81"

Length 2 (L2): 9.63"

Bar Depth (BD): 2.2"

Bar Gap 1 (BG1): 4.41"

Bar Gap 2 (BG2): 5.24"

Coupler Body (CB): 5"

Unit Weight: 12.4 lb

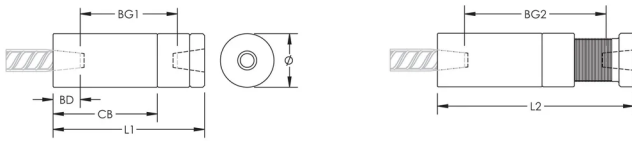
Designed to Meet: AASHTO; ABNT NBR 8548:1984; ACI 318 Type 1 (125% Specified Yield); ACI 318 Type 2 (Specified Tensile); ACI 349; ACI 359; AS3600

Package Quantity: 4

ADDITIONAL PRODUCT DETAILS

Bar dimensions and weights listed may vary by region. Coupler sizes not shown may be available by special order. Contact your nVent LENTON representative for more information.

DIAGRAMS



WARNING

nVent products shall be installed and used only as indicated in nVent's product instruction sheets and training materials. Instruction sheets are available at www.nvent.com and from your nVent customer service representative. Improper installation, misuse, misapplication or other failure to completely follow nVent's instructions and warnings may cause product malfunction, property damage, serious bodily injury and death and/or void your warranty.

North America

+1.800.753.9221

Option 1 – Customer Care

Option 2 – Technical

Support

Europe

Netherlands:

+31 800-0200135

France:

+33 800 901 793

Europe

Germany:

800 1890272

Other Countries:

+31 13 5835404

APAC

Shanghai:

+ 86 21 2412 1618/19

Sydney:

+61 2 9751 8500



Our powerful portfolio of brands:

CADDY

ERICO

HOFFMAN

ILSCO

SCHROFF

TRACHTE