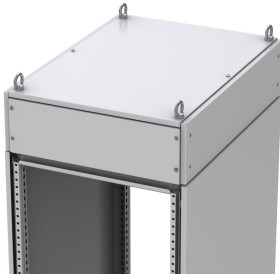


Sivulevyt | Lattiakaapit, MCUP



The extra space created by an extension frame is closed off by using these panels in order to maintain the protection degree and restrict access to the extra space.

FEATURES

Description: For covering the sides of the top cabling frame MCU. Fixed with 4 screws and new patented retainers.

Material: 1.35 mm steel plate.

Finish: RAL 7035 structured powder coating.

Pack quantity: 2 panels with mounting accessories.

SPECIFICATIONS

Thickness: 1.35mm
Color: Light Gray
Material: Mild Steel
Finish: Powder Coated
Color Code: RAL 7035

Table 1/1

Catalog Number	Height	Width	Depth	Enclosure Material
MCUP306R5	300mm	600mm	12mm	Mild Steel
MCUP208R5	200mm	800mm	12mm	Mild Steel
MCUP205R5	200mm	500mm	12mm	Mild Steel
MCUP308R5	300mm	800mm	12mm	Mild Steel
MCUP206R5	200mm	600mm	12mm	Mild Steel

WARNING

nVent products shall be installed and used only as indicated in nVent's product instruction sheets and training materials. Instruction sheets are available at www.nvent.com and from your nVent customer service representative. Improper installation, misuse, misapplication or other failure to completely follow nVent's instructions and warnings may cause product malfunction, property damage, serious bodily injury and death and/or void your warranty.



Our powerful portfolio of brands:

CADDY ERICO HOFFMAN ILSCO SCHROFF TRACHTE