

IBS Advanced Round Insulated Braided Conductor, 630 A, 240 mm², 530 mm

Data Solutions

NUMĂR DE CATALOG

IBSADV240-530

IBS Advanced Round Insulated Braided Conductor, Halogen Free are the ideal ready-to-install flexible wire replacement solution. Round IBS Advanced connect to the terminals of an electrical device without the need for additional accessories, such as angular connectors, spreaders, ring terminal connectors or extenders. Round IBS Advanced are available in cross sections of 120, 185 and 240 mm² (236.82, 365.10, and 473.65 kcmil), lengths from 330 to 1,030 mm (9.06" to 40.55"), and amperages ranging from 420 to 630 A.

Manufactured in an ISO 9001 2015 certified automated facility, round IBS Advanced is formed by weaving high-quality electrolytic copper wire to form a durable low voltage connector with maximum flexibility that allows for more compact power connections to electrical devices. The round IBS Advanced allows users to reduce the total size and weight of the installation, improving both design flexibility and assembly aesthetics.

The round IBS Advanced features pre-punched palms that are ready to connect out of the box. There are no lugs to purchase or install, making connections simpler and faster and eliminating faulty connections due to vibration or fatigue.

The advanced technology insulation is a high-resistance low smoke, halogen-free and flame retardant thermoplastic.

Round IBS Advanced does not generate corrosive gases and produces a relatively low smoke opacity in accordance with IEC 61034-2 and UL 2885. The low smoke characteristic improves the visibility conditions for people to be able to easily locate the emergency exit and also allows rescue workers to better assess an emergency situation. Round IBS Advanced means greater safety for individuals, less damage for your electrical equipment and less environmental impact.



The halogen-free feature enables a reduction in the quantity of toxic smoke. Round IBS Advanced does not contain any halogens, according to IEC 60754-1 and UL 2885, minimizing toxicity and making it the ideal product for use in enclosed spaces such as data centers, rail, and public facilities such as hospitals and schools. This also facilitates the use of round IBS Advanced in specific applications such as submarines, switchboards and other enclosed environments that require a low emissions solution.

In addition to the above features, round IBS Advanced is also compliant with the UL 94-V0 testing standard and Glow wire test 960 °C. The flame retardant portion of the test illustrates the self-extinguish feature. This superior feature of round IBS Advanced is also shown by the Limiting Oxygen Index (LOI) at 30%. In case of fire, round IBS Advanced generates a limited quantity of smoke that is less damaging to your electrical equipment.

CERTIFICATIONS



CARACTERISTICICI

Resistant to vibration, improving reliability and performance

Insulated by high-resistance, halogen free, flame retardant and low smoke material

Tinned copper provides superior corrosion resistance

Improves assembly flexibility and aesthetics

Quick and easy installation

No additional cutting, stripping, crimping and punching needed

Conforms to NF EN 45545 obtaining an HL3 classification for chapters R22 and R23

Small wire diameter provides maximum flexibility

Dramatically smaller and more flexible than comparable cable based on ampacity

Better power density than cable with lower skin effect ratio

Reduces total installation cost

RoHS compliant

ATRIBUTE PRODUS

Article Number: 534528

Typical Application Current Rating: 630A

Material: Copper; Elastomer Termoplastic

Finish: Tinned

Dielectric Strength: 20

Flammability Rating: UL® 94V-0

Halogen Free Rating: UL® 2885; IEC® 60754-1; IEC® 62821-1

Low Smoke Rating: IEC® 61034-2; ISO 5659-2; UL® 2885

UV Resistance Rating: UL® 854; UL® 2556

Insulation Elongation: 500%

Insulation Thickness: 1.8mm

Working Temperature: -50 to 115°C

Max Working Voltage, UL 67: 600

Max Working Voltage, IEC/UL 758: 1000; 1500

Max Working Voltage, EN 50264-3-1: 6000V

Wire Diameter: 0.15mm

Certification Details: UL® 67; UL® 758

Complies With: IEC® 60439.1; IEC® 60695-2-11 (Glow Wire Test 960 °C); IEC® 61439.1; IEC® 61439.1 Class II

Cross Section: 240mm²

Conductor Width: 32mm

Conductor Thickness: 15mm

Length (L): 530mm

A: 13mm

Diameter (Ø): 36mm

Hole Size (HS): 12.5mm

Unit Weight: 1.64kg

DETALII SUPLIMENTARE DESPRE PRODUS

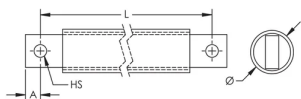
ΔT = Temperature of conductors – Internal temperature of panel.

This table indicates the temperature rise produced by chosen current in the given section. This calculation does not take into account the heat dissipation from the switch gear.

Distance between supports must not exceed 630 mm (17.8") according to IEC 61439-1.

Maximum Ampacity Ratings								
Cross Section (mm ² /kcmil)	ΔT 30° C (A)	ΔT 40° C (A)	ΔT 45° C (A)	ΔT 50° C (A)	ΔT 55° C (A)	ΔT 60° C (A)	ΔT 70° C (A)	2 Bar Current Coefficient
120/236.82	325	376	398	420	441	460	497	1.6
185/365.10	407	470	499	526	552	576	622	1.6
240/473.65	488	563	598	630	661	690	745	1.6

DIAGRAMS



AVERTIZARE

Produsele nVent trebuie instalate și utilizate numai așa cum este indicat în fișele de instrucțiuni și materialele de formare ale nVent. Fișele de instrucțiuni sunt disponibile pe www.nvent.com și de la reprezentantul dvs. de servicii clienți nVent. O instalare incorectă, o utilizare abuzivă, o aplicare greșită sau orice altă lipsă de respectare completă a instrucțiunilor și avertismentelor nVent poate duce la defectarea produsului, la deteriorarea proprietății, la răniri corporale grave și moarte și/sau poate anula garanția dvs.



Portofoliul nostru puternic de mărci:

CADDY ERICO HOFFMAN ILSCO SCHROFF TRACHTE