

S13 Metric Parallel Bolt Coupler, Plain, Worldwide Design, 10 mm, #3, 28 mm, M12 Thread

NUMĂR DE CATALOG

EL10S13N



CERTIFICATIONS



CARACTERISTICI

Provides continuity between reinforcing bar and ISO® 965 metric all-thread rod or bolts

May be used to anchor load-bearing equipment to foundations, columns or walls

Machined from non-weldable grades of material, but can be tack welded

ATRIBUTE PRODUS

Material: Oțel

Finish: Plain

Design Version: Worldwide (Globally Available Materials)

Rebar Size, Metric: 10 mm

Rebar Size, US: #3

Hex Width (W): 17 mm

Length (L): 53mm

A: 28 mm

Bar Depth (BD): 18mm

Thread Size (TS): M12

Thread Depth (TD): 14mm

Unit Weight: 0.07 kg

Designed to Meet: AASHTO;ABNT NBR 8548:1984;ACI 318 Type 1 (125% Specified Yield);ACI 318 Type 2 (Specified Tensile);ACI 349;ACI 359;AS3600

Package Quantity: 145

DETALII SUPLIMENTARE DESPRE PRODUS

Bar dimensions and weights listed may vary by region. Coupler sizes not shown may be available by special order. Contact your nVent LENTON representative for more information.

Coupler supplied without bolt.

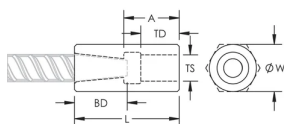
Bolt may be replaced by threaded rod of same class/grade.

All calculations based on a minimum bolt engagement equal to Thread Depth (TD).

System Capacity based on bolt to coupler connection. For rebar to coupler connection, refer to applicable building codes and approvals or contact your nVent LENTON representative.

Bolt-to-Coupler Capacity (kN)					
Part Number	Grade 4.8	Grade 5.8	Grade 8.8	Grade 10.9	Grade 12.9
EL10S13N	33.7	42.1	67.4	67.7	67.7
EL12S13AN	224.2	280.3	448.5	526.3	526.3
EL12S13N	62.7	78.3	109.8	109.8	109.8
EL14S13N	77.0	96.2	154.0	192.5	193.4
EL16S13N	97.9	122.4	162.0	162.0	162.0
EL18S13N	121.4	151.7	242.7	303.4	364.1
EL20S13AN	121.4	151.7	242.7	303.4	356.8
EL20S13BN	97.9	122.4	195.8	244.8	289.4
EL20S13N	141.0	176.3	282.0	332.3	332.3
EL22S13N	183.8	229.7	367.5	449.9	449.9
EL25S13AN	141.0	176.3	282.0	352.5	422.9
EL25S13BN	97.9	122.4	195.8	244.8	293.8
EL25S13N	224.2	280.3	448.5	560.5	560.5
EL28S13N	277.4	346.8	554.8	693.6	728.0
EL30S13N	326.7	408.4	653.4	816.7	890.7
EL32S13AN	224.2	280.3	448.5	560.6	672.7
EL32S13N	390.3	487.9	780.6	783.8	783.8
EL34S13N	390.3	487.9	780.6	783.8	783.8
EL36S13N	448.4	560.5	896.7	1120.9	1197.1
EL38S13N	522.4	653.0	1044.8	1054.8	1054.8
EL40S13AN	589.3	736.6	1178.5	1312.4	1312.4
EL40S13BN	326.7	408.4	653.4	816.7	980.1
EL40S13CN	224.2	280.3	448.5	560.6	672.7
EL40S13M33N	522.4	653.0	1044.8	1054.8	1054.8
EL40S13N	522.4	653.0	1044.8	1054.8	1054.8
EL50TS13M33N	812.0	1015.0	1624.0	2030.0	2168.3
EL50TS13N	812.0	1015.0	1624.0	2030.0	2168.3

DIAGRAMS



AVERTIZARE

Produsele nVent trebuie instalate și utilizate numai așa cum este indicat în fișele de instrucțiuni și materialele de formare ale nVent. Fișele de instrucțiuni sunt disponibile pe www.nvent.com și de la reprezentantul dvs. de servicii clienți nVent. O instalare incorectă, o utilizare abuzivă, o aplicare greșită sau orice altă lipsă de respectare completă a instrucțiunilor și avertismentelor nVent poate duce la defectarea produsului, la deteriorarea proprietății, la răniri corporale grave și moarte

și/sau poate anula garanția dvs.

North America

+1.800.753.9221

Option 1 – Customer Care

Option 2 – Technical

Support

Europe

Netherlands:

+31 800-0200135

France:

+33 800 901 793

Europe

Germany:

800 1890272

Other Countries:

+31 13 5835404

APAC

Shanghai:

+ 86 21 2412 1618/19

Sydney:

+61 2 9751 8500



Portofoliul nostru puternic de mărci:

CADDY

ERICO

HOFFMAN

ILSCO

SCHROFF

TRACHTE