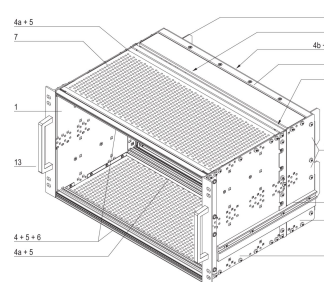
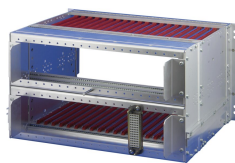
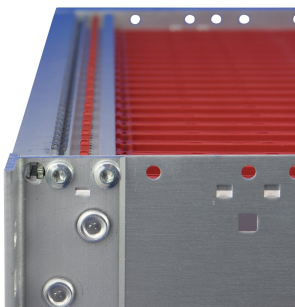
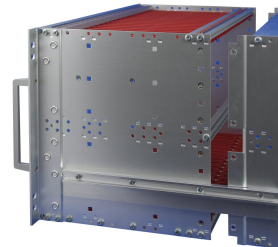
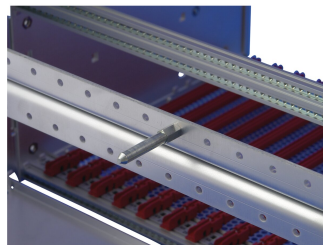
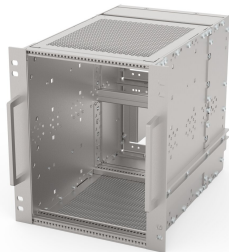


EuropacPRO 19" Subrack Kit for Railway, Shielded, SNCF, 6 U, 36 HP, 320 mm

NUMĂR DE CATALOG

21500-071



Subrack for Railway applications, conform to SNCF Standard.

CERTIFICATIONS



CARACTERISTICI

SNCF listed, EuropacPRO-fer, tested to NF F 61-005 and NF F 60-002

The 19" bracket is firmly fixed to the side panel (tox-cold welded) and is especially suited for high mechanical stresses (vibration resistance)

Lateral support bars to NFF standard facilitate insertion of subrack into the (cabinet) frame. The double 19" screwing position adds to additionally safety (NFF standard)

IP 20, in accordance with IEC 60529

EMC of approximately 40 dB at 1 GHz, 30 dB at 2 GHz, assuming that the front is covered with shielded front panels, testing in accordance with VG 95373 part 15

Aluminum construction

Modifications such as cutouts, different finishes or dimensions available

Supplied as space-saving flat-pack

ATTRIBUTE PRODUS

Rack Height: 6U

Rack Width: 36HP

Package Quantity: 1

For Mounting: Backplane

Board Depth: 220mm

Gasket Type: Textile EMC

Shock and Vibration Tolerance: 5g (force)

Handle Included: Yes

Mounting: Rack

Complies With: IEC 60297-3-103; SNCF NFF 61005; SNCF NFF 60002

Depth: 320mm

EMC Shielding: Yes

Finish: Anodized; Passivated

Material: Aluminiu

Product Type: Subrack/Chassis

Static Load: 15kg

Net Weight: 2.875kg

DETALII SUPLIMENTARE DESPRE PRODUS

Fer = ferroviaire = French Railways, 1 T = 4 HP = 20.32 mm.

Receptacle/mounting frame for subracks, stainless steel, 9 T or 21 T on request.

Individual configuration: broad range of variants in height, width and depth; guide rails for a wide variety of applications; interior options; accessories and mounting material.

AVERTIZARE

Produsele nVent trebuie instalate și utilizate numai așa cum este indicat în fișele de instrucțiuni și materialele de formare ale nVent. Fișele de instrucțiuni sunt disponibile pe www.nvent.com și de la reprezentantul dvs. de servicii clienți nVent. O instalare incorectă, o utilizare abuzivă, o aplicare greșită sau orice altă lipsă de respectare completă a instrucțiunilor și avertismentelor nVent poate duce la defectarea produsului, la deteriorarea proprietății, la răniri corporale grave și moarte și/sau poate anula garanția dvs.

North America

All locations

+1.763.422.2661

Chat with us:

nvent.com/schroff

Europe

Straubenhardt, Germany

+49.7082.794.0

Betschdorf, France

+33.3.88.90.64.90

Warsaw, Poland

+48.22.209.98.35

Assago, Italy

+39.02.932.7141

Chat with us:

nvent.com/schroff

Asia

Shanghai, China

+86.21.2412.6943

Qingdao, China

+86.532.8771.6101

Singapore

+65.6768.5800

Shin-Yokohama, Japan

+81.45.476.0271

Chat with us:

nvent.com/schroff

Middle East & India

Dubai, United Arab Emirates

+971.4.378.1700

Bangalore, India

+91.80.6715.2001

Istanbul, Turkey

+90.216.250.7374

Chat with us:

nvent.com/schroff



Portofoliul nostru puternic de mărci:

CADDY

ERICO

HOFFMAN

ILSCO

SCHROFF

TRACHTE