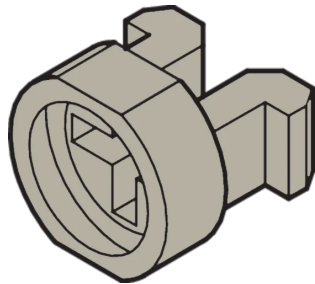


# Sleeves for M2.5



Sleeve guides the collar screw when fastening the front panel.

## CERTIFICATIONS



## CARACTERISTICI

Sleeve guides the collar screw when fastening the front panel

Sleeve is inserted into the elongated hole of the front panel

## SPECIFICAȚII

**Works With:** Front Panels

**Product Type:** Sleeve

Table 1/2

| Număr de catalog | Material        | Finish           | Color       | Package Quantity | Color Code | Depth (D) |
|------------------|-----------------|------------------|-------------|------------------|------------|-----------|
| 21100-886        | Brass           | Organic Top Coat |             | 100              |            | 4.4mm     |
| 21100-662        | Stainless Steel |                  |             | 100              |            | 4.4mm     |
| 21100-660        | Brass           | Nickel Plated    |             | 100              |            | 4.4mm     |
| 21100-591        | Polyamide 6     |                  | Jet Black   | 100              | RAL 9005   | 6.9mm     |
| 21100-464        | Polyamide 6     |                  | Pebble Grey | 100              | RAL 7032   | 6.9mm     |
| 21100-659        | Brass           | Nickel Plated    |             | 10               |            |           |

| Număr de catalog | Material        | Finish | Color | Package Quantity | Color Code | Depth (D) |
|------------------|-----------------|--------|-------|------------------|------------|-----------|
| 21100-661        | Stainless Steel |        |       | 10               |            |           |
| 21100-885        | Brass           |        |       | 10               |            |           |

Table 2/2

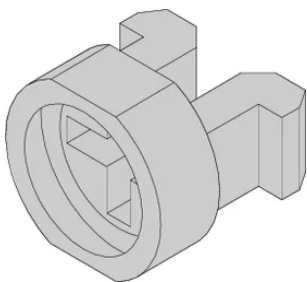
| Număr de catalog | Height (H) | Width (W) | Flammability Rating |
|------------------|------------|-----------|---------------------|
| 21100-886        | 6mm        | 8mm       |                     |
| 21100-662        | 6mm        | 8mm       |                     |
| 21100-660        | 6mm        | 8mm       |                     |
| 21100-591        | 6mm        | 6.8mm     | UL® 94V-2           |
| 21100-464        | 6mm        | 6.8mm     | UL® 94V-2           |
| 21100-659        |            |           |                     |
| 21100-661        |            |           |                     |
| 21100-885        |            |           |                     |

## DETALII SUPLIMENTARE DESPRE PRODUS

Metal sleeves on the partial front panels must be pressed in.

All sleeves can be used for front panel > 2 HP.

## DIAGRAMS



## AVERTIZARE

Produsele nVent trebuie instalate și utilizate numai așa cum este indicat în fișele de instrucțiuni și materialele de formare ale nVent. Fișele de instrucțiuni sunt disponibile pe [www.nvent.com](http://www.nvent.com) și de la reprezentantul dvs. de servicii clienți nVent. O instalare incorectă, o utilizare abuzivă, o aplicare greșită sau orice altă lipsă de respectare completă a instrucțiunilor și avertismentelor nVent poate duce la defectarea produsului, la deteriorarea proprietății, la răni corporale grave și moarte și/sau poate anula garanția dvs.

### North America

All locations  
+1.763.422.2661  
Chat with us:  
[nvent.com/schroff](https://nvent.com/schroff)

### Europe

Straubenhardt, Germany  
+49.7082.794.0  
Betschdorf, France  
+33.3.88.90.64.90  
Warsaw, Poland  
+48.22.209.98.35  
Assago, Italy  
+39.02.932.7141  
Chat with us:  
[nvent.com/schroff](https://nvent.com/schroff)

### Asia

Shanghai, China  
+86.21.2412.6943  
Qingdao, China  
+86.532.8771.6101  
Singapore  
+65.6768.5800  
Shin-Yokohama, Japan  
+81.45.476.0271  
Chat with us:  
[nvent.com/schroff](https://nvent.com/schroff)

### Middle East & India

Dubai, United Arab  
Emirates  
+971.4.378.1700  
Bangalore, India  
+91.80.6715.2001  
Istanbul, Turkey  
+90.216.250.7374  
Chat with us:  
[nvent.com/schroff](https://nvent.com/schroff)



Portofoliul nostru puternic de mărci:

**CADDY ERICO HOFFMAN ILSCO SCHROFF TRACHTE**