

Taper-Threaded Rebar Splicing Systems



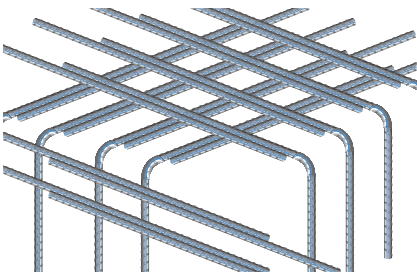
European Central Bank, Frankfurt

Lap Splicing Disadvantages

Lap splicing has few advantages and many disadvantages when compared to mechanical splicing.

IS LAP SPLICING RELIABLE?

- Lap Splices develop their strength from interaction with concrete
- Lap splices cause non-ductile failure under severe loading and have poor cyclic performance

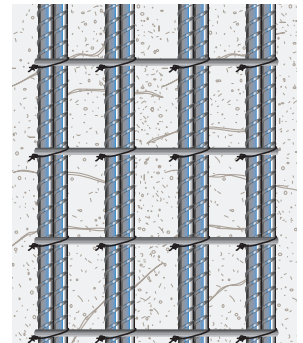


DESIGN CONSTRUCTIVE

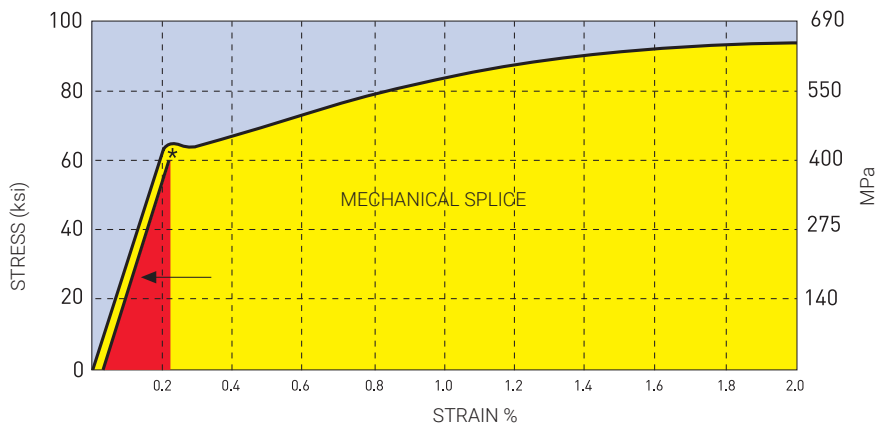
- Lap length required for bars in tension is normally longer than same size bars in compression
- Lap splices double the number of bars leading to rebar congestion which can restrict the flow of aggregates
- To prevent concrete splitting, additional rebar may be required for confinement

HIDDEN COSTS

- The larger the bar diameter, the longer the lap
- The lower the concrete strength and the higher the yield stress, the longer and greater lap length required
- Corrosion-resistant coated bars are expensive and longer length may be required
- Lap splicing involves time consuming calculations which may lead to errors or overestimating



LACK OF STRUCTURAL INTEGRITY



- When designing with lap splices, design strengths and strains must be less than the yield point of the bar (red zone)
- Improperly designed lap splices can lead to premature building failure
- Once rebar is stretched beyond its elastic limit*, both the lap splice and concrete become compromised, putting occupants at risk

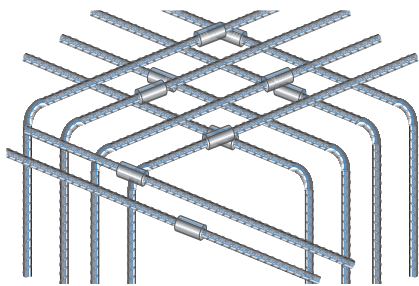
*Point of elastic limit is denoted in graph

Mechanical Splicing Advantages

nVent LENTON Mechanical Splicing provides a positive locking connection and structural integrity in reinforced concrete construction. It also develops higher tensile strength and strain capacity than lap splicing while providing for full load transfer with some of the slimmest and shortest couplers possible.

PROVEN RELIABILITY

- Performs similar to a continuous piece of rebar
- Splice strength is developed independent of concrete quality
- Provides ductility independent of concrete condition
- Achieves greater strength and ductility, especially during man-made, seismic or natural events
- Superior inelastic and elastic cyclic performance

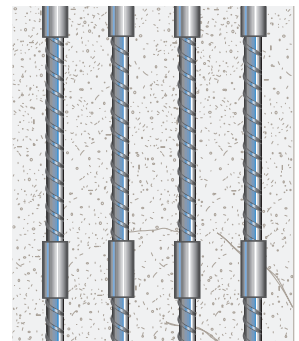


DESIGN FRIENDLY

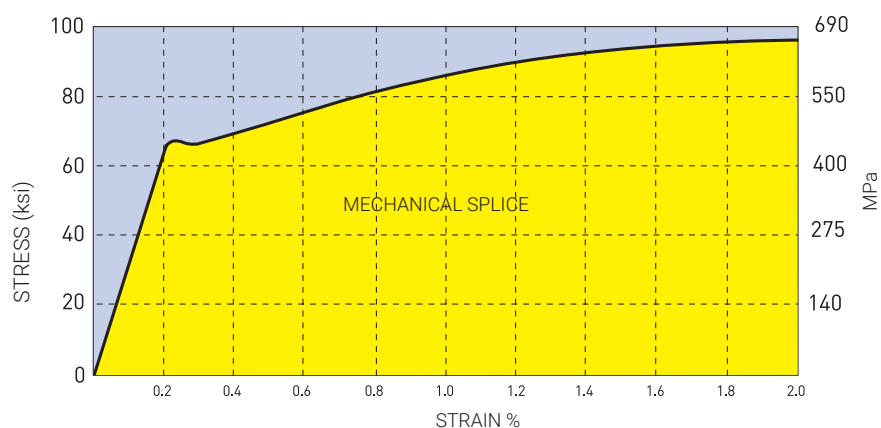
- Reduces rebar congestion and improves concrete consolidation
- Allows greater flexibility in design options
- Improves steel-to-concrete ratio

ECONOMICAL BENEFITS

- Requires no special skills and reduces labor costs
- Accelerates construction schedules for reduced cost and improved efficiency
- Suitable for prefabrication of reinforcement, saving valuable crane time
- Reduces material costs with less rebar usage



INCREASED STRUCTURAL INTEGRITY



- When designing with mechanical splices, contractors can take advantage of the full range of load path (yellow zone)
- Eliminates lap splices in high-stress regions and reduces congestion
- When designing beyond the elastic limit, mechanical splices reduce potential of building collapse and increases safety of occupants

nVent LENTON Trusted Experts for Reinforcing Steel Connections

UNIQUE TAPER-THREADED DESIGN

The self-aligning, taper-threaded design brought to you by nVent LENTON provides ease of installation, consistent performance and durability. It also develops higher tensile strength than lap splicing and provides full load transfer with the slimmest and shortest coupler possible.

ECONOMY OF DESIGN

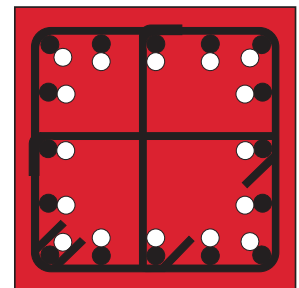
Mechanical splices cut the amount of necessary bars in the "lap zone" in half. With nVent LENTON Mechanical Splices, you can design smaller columns and maximize floor space while reducing cost.

DESIGN BENEFITS

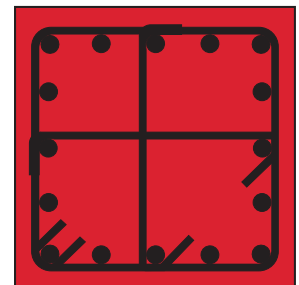
- Allows maximum bar cross-section to be used
- Smaller diameter reduces the need for concrete cover and eliminates rebar congestion
- Short length and slim design ensures the least disturbance in uniform stiffness
- Splice length is independent of rebar deformation
- Unique tapered thread requires no lock nuts and provides positive locking with a no-slip connection
- Any length, shape, diameter or combination of bar sizes can be mechanically spliced

INSTALLATION BENEFITS

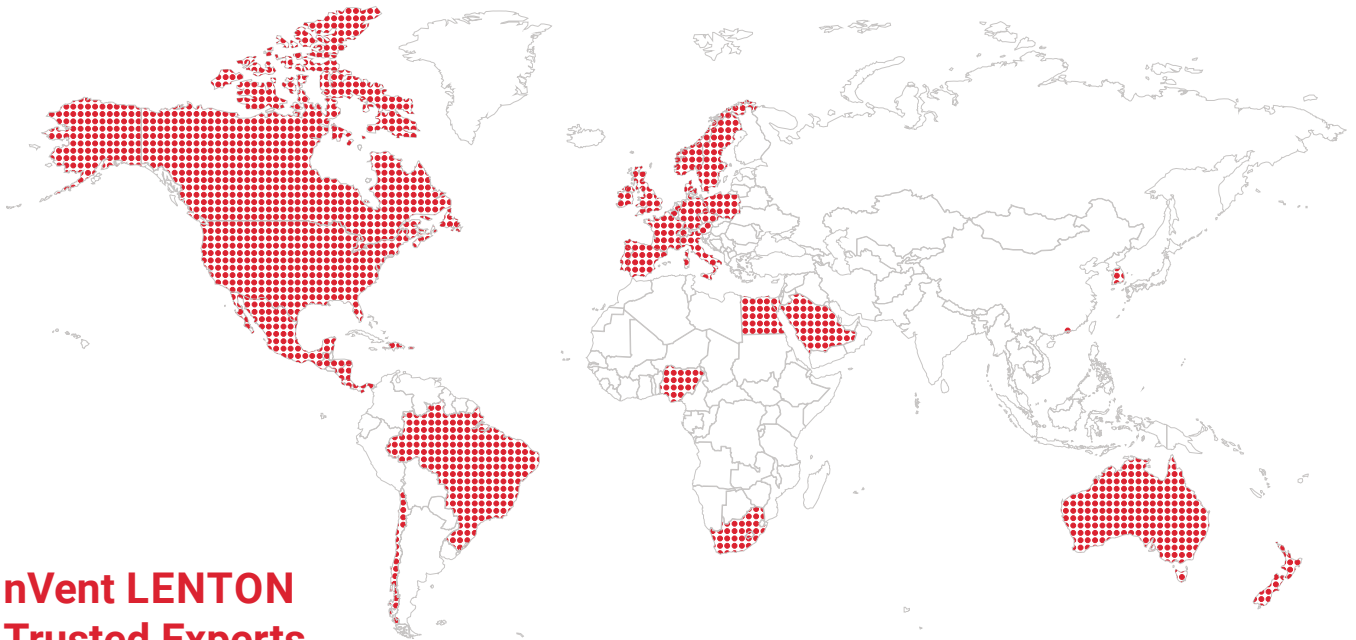
- Fastest system to install:
 - No special tools or skills required
 - No power required for installation
 - Splice inspection is quick and easy
 - Reduces crane time
- Takes approximately 4.5 turns to engage
- Prevents cross-threading
- Bar threader is easy-to-use and can be set up on-site or at the fabricator
- Allows for prefabrication in the shop saving time on the job site and accelerating construction schedules



Lap splice – additional rebar in the lap zone.



nVent LENTON Mechanical Splice – ideal balance of steel and concrete.



nVent LENTON Trusted Experts Across the Globe

nVent LENTON is constantly evolving product offerings to meet new regional needs. Reach out to your local nVent LENTON Sales Representative for more information.

nVent LENTON is a world-leading brand of advanced mechanical rebar splicing systems. The “Rebar Splicing Specialists” at nVent understand the concrete construction business and inherent rebar splicing problems. Our engineering capabilities, broad experience and extensive test data combined with our multiple splicing and anchorage systems, allow us to provide engineers and contractors with product solutions to rebar splicing challenges – today and into the future.

CODE REQUIREMENTS

nVent LENTON Mechanical Splice products meet or exceed International Codes and Standards and has a large number of approvals across the globe. See nVent.com/LENTON for specific listings and updated certifications and approvals.



NVENT LENTON MECHANICAL REBAR SPLICES: PROVEN AND TESTED



Rebar Splicing Specialists

Designed by nVent LENTON personnel who understand inherent rebar splicing issues.



Customer Safety

Our solutions are created with a Safety First mindset.



Meets Code Requirements

The most effective method of joining reinforcing bars and meeting the code requirements of national and international regulatory organizations.

nVent LENTON Mechanical Splices Stand the Test of Time

PROVIDES CONTINUITY IN QUALITY AND STRENGTH

nVent LENTON Taper-Threaded Couplers are manufactured from high-strength and high-quality steel.

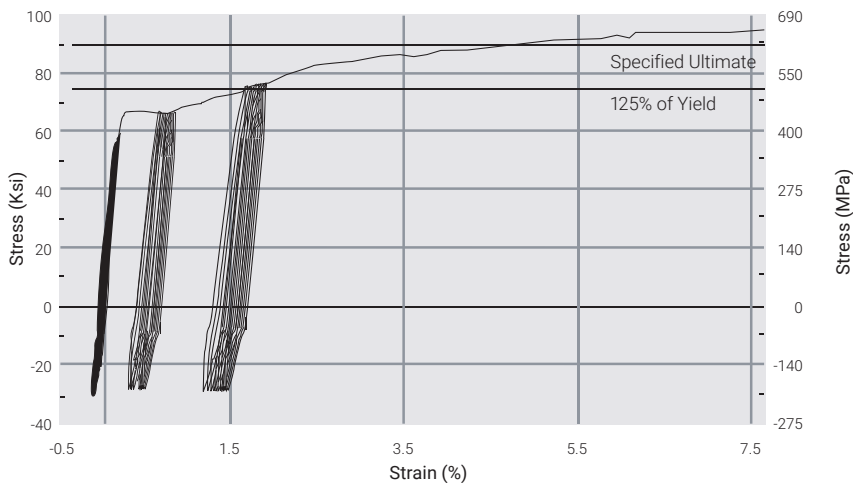
SEISMIC AND FATIGUE

nVent LENTON products are designed for both high-movement, short-duration and low-movement, long-duration strains. Our mechanical couplers can provide resilience regardless of application.

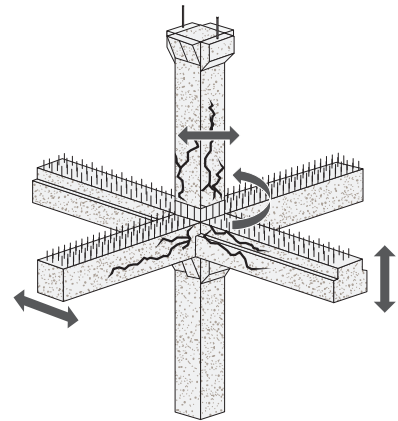
When you work with nVent LENTON Splices, you gain the ability to design and build concrete structures that meet or exceed stringent construction codes and global regulations regarding seismic frame construction.



TEST CONDUCTED TO ICC AC 133 PERFORMED ON TYPICAL U.S. REBAR



nVent LENTON provides superior performance in cyclic reversal applications.



MECHANICAL SPLICING BENEFITS THROUGH TIME



Safety and Reliability

Mechanical connections and terminators/anchors offer reliability and greater structural integrity. nVent LENTON Couplers also enhance job site safety.



Improves Efficiency

nVent LENTON Couplers help to eliminate construction delays due to rebar congestion and can accelerate construction schedules.

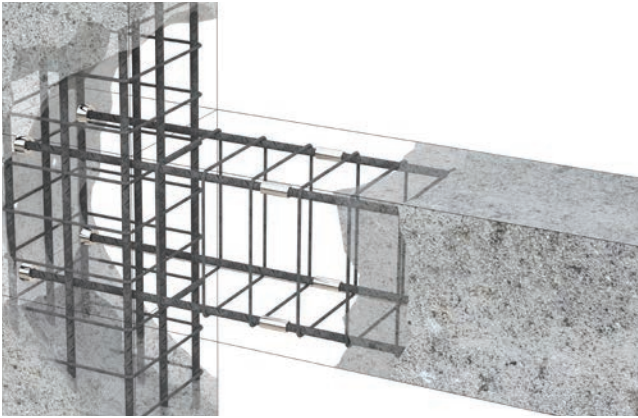


Seismic and Fatigue

nVent LENTON products are designed to provide structural integrity in the most demanding applications.

Applications

Beam/Column



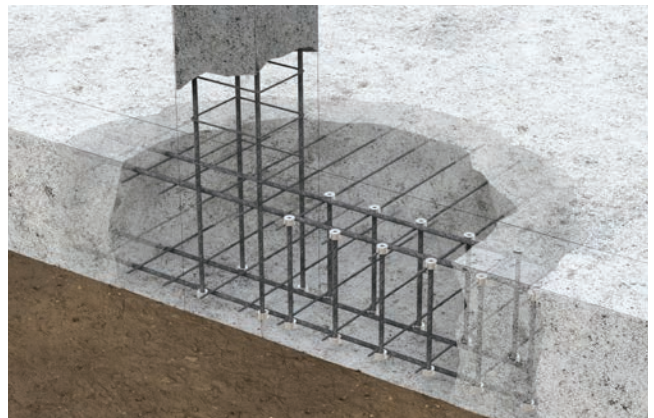
Roof/Column



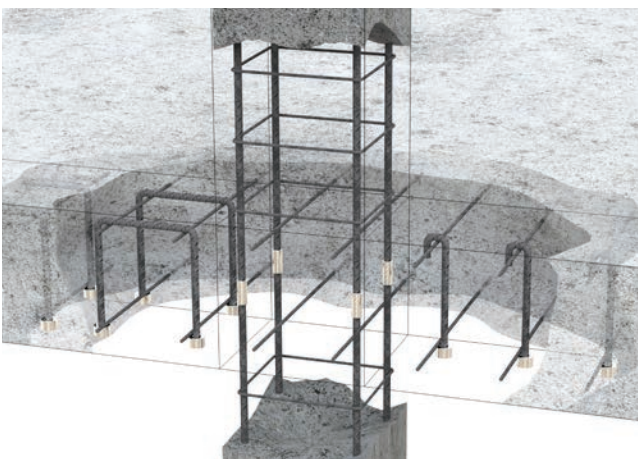
Piles/Caissons



Base Slabs/Shear Reinforcement



Intermediate Floor Slabs



Legend



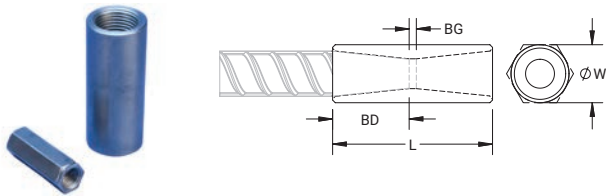
nVent LENTON Standard Couplers

nVent LENTON Standard Couplers are designed to splice the same diameter bars where one bar can be rotated and the bar is not restricted in its axial direction.

- ✓ Slim design maintains concrete cover
- ✓ Installs quickly and easily

- ✓ Product available globally; for regional product requests, contact your local nVent LENTON Sales Representative

NVENT LENTON STANDARD COUPLERS - A12



- For use with BS EN 10080, BS 4449 and DIN 488 rebar

Catalog Number	Rebar Size, Metric	Hex Width W	Diameter Ø	Length L	Bar Depth BD	Bar Gap BG	Unit Weight	Certifications
EL10A12N	10 mm	17 mm	–	49 mm	18 mm	13 mm	0.07 kg	AFCAB, CARES, DIBt, TZUS, Kontrollrådet, RISE, ITB, ACRS
EL12A12N	12 mm	17 mm	–	50 mm	19 mm	12 mm	0.06 kg	IAPMO®-UES, LA City Approval, AFCAB, CARES, DIBt, KOMO, TZUS, Kontrollrådet, RISE, ITB, ACRS
EL14A12N	14 mm	22 mm	–	56 mm	21 mm	14 mm	0.13 kg	IAPMO®-UES, LA City Approval, AFCAB, CARES, DIBt, KOMO, TZUS, Kontrollrådet, RISE, ITB, ACRS
EL16A12N	16 mm	22 mm	–	61 mm	24 mm	13 mm	0.13 kg	IAPMO®-UES, LA City Approval, AFCAB, CARES, DIBt, KOMO, TZUS, Kontrollrådet, RISE, ITB, ACRS
EL18A12N	18 mm	27 mm	–	72 mm	29 mm	14 mm	0.25 kg	IAPMO®-UES, LA City Approval, TZUS, ITB, ACRS
EL20A12N	20 mm	27 mm	–	87 mm	35 mm	17 mm	0.27 kg	IAPMO®-UES, LA City Approval, AFCAB, CARES, DIBt, KOMO, TZUS, Kontrollrådet, RISE, ITB, ACRS
EL22A12N	22 mm	30 mm	–	91 mm	37 mm	17 mm	0.35 kg	IAPMO®-UES, LA City Approval, TZUS, ITB, ACRS
EL25A12N	25 mm	–	35 mm	97 mm	40 mm	17 mm	0.44 kg	IAPMO®-UES, LA City Approval, AFCAB, CARES, DIBt, KOMO, TZUS, Kontrollrådet, RISE, ITB, ACRS
EL28A12N	28 mm	–	40 mm	101 mm	42 mm	17 mm	0.61 kg	IAPMO®-UES, LA City Approval, DIBt, KOMO, TZUS, ITB, ACRS
EL30A12N	30 mm	–	40 mm	121 mm	52 mm	17 mm	0.69 kg	IAPMO®-UES, LA City Approval, ACRS
EL32A12N	32 mm	–	45 mm	108 mm	45 mm	18 mm	0.79 kg	IAPMO®-UES, LA City Approval, AFCAB, CARES, DIBt, KOMO, TZUS, Kontrollrådet, RISE, ITB, ACRS
EL34A12N	34 mm	–	45 mm	128 mm	55 mm	18 mm	0.89 kg	IAPMO®-UES, LA City Approval, ACRS
EL36A12N	36 mm	–	50 mm	121 mm	52 mm	17 mm	1.08 kg	IAPMO®-UES, LA City Approval, TZUS, ACRS
EL38A12N	38 mm	–	55 mm	124 mm	53 mm	18 mm	1.41 kg	IAPMO®-UES, LA City Approval, ACRS
EL40A12N	40 mm	–	55 mm	131 mm	57 mm	17 mm	1.4 kg	IAPMO®-UES, LA City Approval, AFCAB, CARES, DIBt, TZUS, RISE, ITB, ACRS
EL43TA12N	43 mm	–	60 mm	158 mm	66 mm	26 mm	2.07 kg	IAPMO®-UES, LA City Approval
EL50TA12N	50 mm	–	70 mm	166 mm	70 mm	26 mm	2.91 kg	IAPMO®-UES, LA City Approval, CARES
EL57TA12N	57 mm	–	80 mm	192 mm	83 mm	26 mm	4.45 kg	IAPMO®-UES, LA City Approval

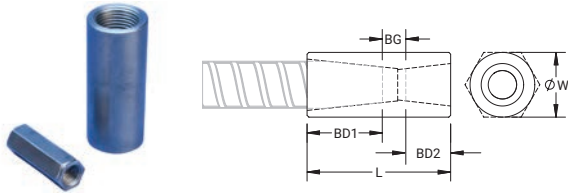
nVent LENTON Standard Transition Couplers

nVent LENTON Standard Transition Couplers are designed to splice different diameter bars where at least one bar can be rotated and the bar is not restricted in its axial direction.

- ✓ Slim design maintains concrete cover
- ✓ Installs quickly and easily

- ✓ Product available globally; for regional product requests, contact your local nVent LENTON Sales Representative

NVENT LENTON TRANSITION COUPLERS - A12



- For use with BS EN 10080, BS 4449 and DIN 488 rebar

Catalog Number	Rebar Size, Metric	Hex Width W	Diameter Ø	Length L	Bar Depth 1 BD1	Bar Depth 2 BD2	Bar Gap BG	Unit Weight	Certifications
EL1210A12N	12 mm, 10 mm	17 mm	–	55 mm	19 mm	18 mm	18 mm	0.08 kg	DIBt, Kontrollrådet, RISE, ITB
EL1412A12N	14 mm, 12 mm	22 mm	–	57 mm	21 mm	19 mm	17 mm	0.14 kg	Kontrollrådet, DIBt, CARES, Kontrollrådet, RISE, KOMO, ITB
EL1612A12N	16 mm, 12 mm	22 mm	–	61 mm	24 mm	19 mm	18 mm	0.14 kg	RISE, CARES, LA City Approval, KOMO, ITB, Kontrollrådet, IAPMO®-UES, Kontrollrådet
EL1614A12N	16 mm, 14 mm	22 mm	–	64 mm	24 mm	21 mm	19 mm	0.14 kg	CARES, ITB, DIBt, Kontrollrådet, Kontrollrådet, KOMO, RISE
EL1410A12N	14 mm, 10 mm	22 mm	–	57 mm	21 mm	18 mm	18 mm	0.15 kg	ITB, Kontrollrådet
EL1610A12N	16 mm, 10 mm	22 mm	–	61 mm	24 mm	18 mm	19 mm	0.15 kg	ITB, Kontrollrådet
EL1810A12N	18 mm, 10 mm	27 mm	–	66 mm	29 mm	18 mm	19 mm	0.25 kg	ITB
EL1812A12N	18 mm, 12 mm	27 mm	–	66 mm	29 mm	19 mm	18 mm	0.25 kg	ITB
EL1814A12N	18 mm, 14 mm	27 mm	–	69 mm	29 mm	21 mm	19 mm	0.25 kg	ITB
EL1816A12N	18 mm, 16 mm	27 mm	–	71 mm	29 mm	24 mm	18 mm	0.25 kg	ITB
EL2012A12N	20 mm, 12 mm	27 mm	–	74 mm	35 mm	19 mm	20 mm	0.26 kg	Kontrollrådet, KOMO, RISE, CARES, ITB, Kontrollrådet
EL2010A12N	20 mm, 10 mm	27 mm	–	74 mm	35 mm	18 mm	21 mm	0.27 kg	ITB, Kontrollrådet
EL2014A12N	20 mm, 14 mm	27 mm	–	77 mm	35 mm	21 mm	21 mm	0.27 kg	CARES, ITB, Kontrollrådet, KOMO, Kontrollrådet, RISE
EL2016A12N	20 mm, 16 mm	27 mm	–	80 mm	35 mm	24 mm	21 mm	0.27 kg	KOMO, LA City Approval, ITB, DIBt, Kontrollrådet, Kontrollrådet, CARES, RISE, IAPMO®-UES
EL2018A12N	20 mm, 18 mm	27 mm	–	85 mm	35 mm	29 mm	21 mm	0.27 kg	ITB
EL2212A12N	22 mm, 12 mm	30 mm	–	77 mm	37 mm	19 mm	21 mm	0.34 kg	ITB

nVent LENTON Standard Transition Couplers

Catalog Number	Rebar Size, Metric	Hex Width W	Diameter Ø	Length L	Bar Depth 1 BD1	Bar Depth 2 BD2	Bar Gap BG	Unit Weight	Certifications
EL2210A12N	22 mm, 10 mm	30 mm	–	77 mm	37 mm	18 mm	22 mm	0.35 kg	ITB
EL2214A12N	22 mm, 14 mm	30 mm	–	80 mm	37 mm	21 mm	22 mm	0.35 kg	ITB
EL2216A12N	22 mm, 16 mm	30 mm	–	83 mm	37 mm	24 mm	22 mm	0.35 kg	ITB
EL2218A12N	22 mm, 18 mm	30 mm	–	87 mm	37 mm	29 mm	21 mm	0.36 kg	ITB
EL2220A12N	22 mm, 20 mm	30 mm	–	95 mm	37 mm	35 mm	23 mm	0.38 kg	LA City Approval, IAPMO®-UES, ITB
EL2512A12N	25 mm, 12 mm	–	35 mm	81 mm	40 mm	19 mm	22 mm	0.43 kg	RISE, Kontrollrådet, ITB, Kontrollrådet, KOMO, CARES
EL2510A12N	25 mm, 10 mm	–	35 mm	81 mm	40 mm	18 mm	23 mm	0.44 kg	Kontrollrådet
EL2514A12N	25 mm, 14 mm	–	35 mm	83 mm	40 mm	21 mm	22 mm	0.44 kg	ITB, Kontrollrådet, KOMO, CARES, RISE, Kontrollrådet
EL2516A12N	25 mm, 16 mm	–	35 mm	86 mm	40 mm	24 mm	22 mm	0.45 kg	KOMO, Kontrollrådet, CARES, RISE, Kontrollrådet, ITB
EL2518A12N	25 mm, 18 mm	–	35 mm	90 mm	40 mm	29 mm	21 mm	0.47 kg	nVent LENTON EPD - Product Specific, ITB
EL2522A12N	25 mm, 22 mm	–	35 mm	100 mm	40 mm	37 mm	23 mm	0.49 kg	IAPMO®-UES, LA City Approval, ITB, nVent LENTON EPD - Product Specific
EL2520A12N	25 mm, 20 mm	–	35 mm	98 mm	40 mm	35 mm	23 mm	0.5 kg	Kontrollrådet, CARES, nVent LENTON EPD - Product Specific, RISE, KOMO, Kontrollrådet, DIBt, ITB
EL2814A12N	28 mm, 14 mm	–	40 mm	86 mm	42 mm	21 mm	23 mm	0.61 kg	ITB, nVent LENTON EPD - Product Specific, KOMO
EL2816A12N	28 mm, 16 mm	–	40 mm	88 mm	42 mm	24 mm	22 mm	0.62 kg	ITB, nVent LENTON EPD - Product Specific, KOMO
EL2818A12N	28 mm, 18 mm	–	40 mm	93 mm	42 mm	29 mm	22 mm	0.65 kg	ITB, nVent LENTON EPD - Product Specific
EL3016A12N	30 mm, 16 mm	–	40 mm	99 mm	52 mm	24 mm	23 mm	0.66 kg	nVent LENTON EPD - Product Specific
EL2825A12N	28 mm, 25 mm	–	40 mm	104 mm	42 mm	40 mm	22 mm	0.67 kg	ITB, nVent LENTON EPD - Product Specific, LA City Approval, KOMO, IAPMO®-UES, DIBt
EL3028A12N	30 mm, 28 mm	–	40 mm	117 mm	52 mm	42 mm	23 mm	0.68 kg	nVent LENTON EPD - Product Specific
EL2820A12N	28 mm, 20 mm	–	40 mm	101 mm	42 mm	35 mm	24 mm	0.69 kg	ITB, nVent LENTON EPD - Product Specific, KOMO
EL2822A12N	28 mm, 22 mm	–	40 mm	103 mm	42 mm	37 mm	24 mm	0.69 kg	ITB, nVent LENTON EPD - Product Specific
EL3018A12N	30 mm, 18 mm	–	40 mm	103 mm	52 mm	29 mm	22 mm	0.69 kg	nVent LENTON EPD - Product Specific
EL3025A12N	30 mm, 25 mm	–	40 mm	115 mm	52 mm	40 mm	23 mm	0.71 kg	nVent LENTON EPD - Product Specific
EL3020A12N	30 mm, 20 mm	–	40 mm	110 mm	52 mm	35 mm	23 mm	0.73 kg	nVent LENTON EPD - Product Specific
EL3022A12N	30 mm, 22 mm	–	40 mm	113 mm	52 mm	37 mm	24 mm	0.73 kg	nVent LENTON EPD - Product Specific

nVent LENTON Standard Transition Couplers

Catalog Number	Rebar Size, Metric	Hex Width W	Diameter Ø	Length L	Bar Depth 1 BD1	Bar Depth 2 BD2	Bar Gap BG	Unit Weight	Certifications
EL3216A12N	32 mm, 16 mm	–	45 mm	92 mm	45 mm	24 mm	23 mm	0.81 kg	Kontrollrådet, CARES, nVent LENTON EPD - Product Specific, Kontrollrådet, KOMO, ITB, RISE
EL3218A12N	32 mm, 18 mm	–	45 mm	98 mm	45 mm	29 mm	24 mm	0.86 kg	nVent LENTON EPD - Product Specific, ITB
EL3228A12N	32 mm, 28 mm	–	45 mm	110 mm	45 mm	42 mm	23 mm	0.88 kg	nVent LENTON EPD - Product Specific, IAPMO®-UES, LA City Approval, KOMO, ITB, DIBt
EL3432A12N	34 mm, 32 mm	–	50 mm	123 mm	55 mm	45 mm	23 mm	1.24 kg	nVent LENTON EPD - Product Specific
EL4038A12N	40 mm, 38 mm	–	55 mm	133 mm	57 mm	53 mm	23 mm	1.47 kg	nVent LENTON EPD - Product Specific
EL3632A12N	36 mm, 32 mm	–	50 mm	120 mm	52 mm	45 mm	23 mm	1.15 kg	IAPMO®-UES, LA City Approval, nVent LENTON EPD - Product Specific
EL3836A12N	38 mm, 36 mm	–	55 mm	128 mm	53 mm	52 mm	23 mm	1.51 kg	nVent LENTON EPD - Product Specific
EL3634A12N	36 mm, 34 mm	–	50 mm	130 mm	52 mm	55 mm	23 mm	1.23 kg	nVent LENTON EPD - Product Specific
EL4036A12N	40 mm, 36 mm	–	55 mm	132 mm	57 mm	52 mm	23 mm	1.5 kg	nVent LENTON EPD - Product Specific
EL3225A12N	32 mm, 25 mm	–	45 mm	109 mm	45 mm	40 mm	24 mm	0.91 kg	Kontrollrådet, RISE, CARES, nVent LENTON EPD - Product Specific, Kontrollrådet, ITB, KOMO
EL3230A12N	32 mm, 30 mm	–	45 mm	120 mm	45 mm	52 mm	23 mm	0.95 kg	nVent LENTON EPD - Product Specific
EL3428A12N	34 mm, 28 mm	–	50 mm	120 mm	55 mm	42 mm	23 mm	1.28 kg	nVent LENTON EPD - Product Specific
EL3832A12N	38 mm, 32 mm	–	55 mm	122 mm	53 mm	45 mm	24 mm	1.51 kg	nVent LENTON EPD - Product Specific
EL3220A12N	32 mm, 20 mm	–	45 mm	105 mm	45 mm	35 mm	25 mm	0.92 kg	Kontrollrådet, ITB, KOMO, RISE, Kontrollrådet, CARES, nVent LENTON EPD - Product Specific
EL3430A12N	34 mm, 30 mm	–	50 mm	131 mm	55 mm	52 mm	24 mm	1.37 kg	nVent LENTON EPD - Product Specific
EL3834A12N	38 mm, 34 mm	–	55 mm	132 mm	53 mm	55 mm	24 mm	1.62 kg	nVent LENTON EPD - Product Specific
EL4032A12N	40 mm, 32 mm	–	55 mm	126 mm	57 mm	45 mm	24 mm	1.5 kg	DIBt, CARES, Kontrollrådet, nVent LENTON EPD - Product Specific, RISE, ITB
EL4034A12N	40 mm, 34 mm	–	55 mm	136 mm	57 mm	55 mm	24 mm	1.61 kg	nVent LENTON EPD - Product Specific
EL3222A12N	32 mm, 22 mm	–	45 mm	107 mm	45 mm	37 mm	25 mm	0.93 kg	ITB, nVent LENTON EPD - Product Specific
EL3628A12N	36 mm, 28 mm	–	50 mm	118 mm	52 mm	42 mm	24 mm	1.19 kg	nVent LENTON EPD - Product Specific
EL3630A12N	36 mm, 30 mm	–	50 mm	128 mm	52 mm	52 mm	24 mm	1.28 kg	nVent LENTON EPD - Product Specific
EL3425A12N	34 mm, 25 mm	–	50 mm	119 mm	55 mm	40 mm	24 mm	1.31 kg	nVent LENTON EPD - Product Specific

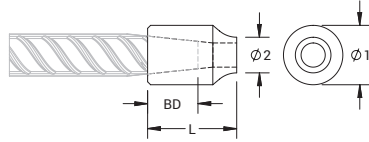
nVent LENTON Standard Transition Couplers

Catalog Number	Rebar Size, Metric	Hex Width W	Diameter Ø	Length L	Bar Depth 1 BD1	Bar Depth 2 BD2	Bar Gap BG	Unit Weight	Certifications
EL3828A12N	38 mm, 28 mm	–	55 mm	119 mm	53 mm	42 mm	24 mm	1.54 kg	nVent LENTON EPD - Product Specific
EL3625A12N	36 mm, 25 mm	–	50 mm	116 mm	52 mm	40 mm	24 mm	1.22 kg	nVent LENTON EPD - Product Specific
EL3830A12N	38 mm, 30 mm	–	55 mm	130 mm	53 mm	52 mm	25 mm	1.67 kg	nVent LENTON EPD - Product Specific
EL4028A12N	40 mm, 28 mm	–	55 mm	123 mm	57 mm	42 mm	24 mm	1.54 kg	nVent LENTON EPD - Product Specific, ITB
EL4030A12N	40 mm, 30 mm	–	55 mm	134 mm	57 mm	52 mm	25 mm	1.66 kg	nVent LENTON EPD - Product Specific
EL3422A12N	34 mm, 22 mm	–	50 mm	117 mm	55 mm	37 mm	25 mm	1.32 kg	nVent LENTON EPD - Product Specific
EL3825A12N	38 mm, 25 mm	–	55 mm	118 mm	53 mm	40 mm	25 mm	1.56 kg	nVent LENTON EPD - Product Specific
EL4025A12N	40 mm, 25 mm	–	55 mm	122 mm	57 mm	40 mm	25 mm	1.56 kg	RISE, Kontrollrådet, ITB, CARES, nVent LENTON EPD - Product Specific
EL3420A12N	34 mm, 20 mm	–	50 mm	115 mm	55 mm	35 mm	25 mm	1.31 kg	nVent LENTON EPD - Product Specific
EL3622A12N	36 mm, 22 mm	–	50 mm	114 mm	52 mm	37 mm	25 mm	1.22 kg	nVent LENTON EPD - Product Specific
EL3620A12N	36 mm, 20 mm	–	50 mm	112 mm	52 mm	35 mm	25 mm	1.22 kg	nVent LENTON EPD - Product Specific
EL43T36A12N	43 mm, 36 mm	–	60 mm	148 mm	66 mm	52 mm	30 mm	2.1 kg	IAPMO®-UES, LA City Approval, nVent LENTON EPD - Product Specific
EL50T40A12N	50 mm, 40 mm	–	70 mm	157 mm	70 mm	57 mm	30 mm	3.09 kg	CARES, nVent LENTON EPD - Product Specific
EL50T38A12N	50 mm, 38 mm	–	70 mm	154 mm	70 mm	53 mm	31 mm	3.06 kg	nVent LENTON EPD - Product Specific
EL50T36A12N	50 mm, 36 mm	–	70 mm	153 mm	70 mm	52 mm	31 mm	3.08 kg	nVent LENTON EPD - Product Specific
EL50T32A12N	50 mm, 32 mm	–	70 mm	147 mm	70 mm	45 mm	32 mm	3 kg	CARES, nVent LENTON EPD - Product Specific
EL50T34A12N	50 mm, 34 mm	–	70 mm	156 mm	70 mm	55 mm	31 mm	3.22 kg	nVent LENTON EPD - Product Specific
EL57T43TA12N	57 mm, 43 mm	–	80 mm	184 mm	83 mm	66 mm	35 mm	4.87 kg	nVent LENTON EPD - Product Specific, IAPMO®-UES, LA City Approval

nVent LENTON Weldable Couplers

nVent LENTON Weldable Couplers provide a quick and easy solution for connecting reinforcing steel bar (rebar) to structural steel sections or plates.

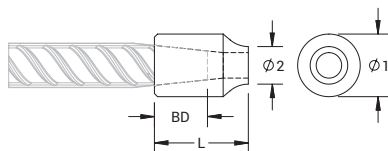
C13 WELDABLE HALF COUPLER



- Designed for connecting reinforcing bar perpendicular to structural steel sections or plates
- Internally taper threaded on one end, with the other end prepared for welding
- Machined from weldable grades of steel
- Slim design maintains concrete cover

Catalog Number	Rebar Size, Metric	Diameter 1 Ø1	Diameter 2 Ø2	Length L	Bar Depth BD	Unit Weight	Certifications
EL12C13N	12 mm	20 mm	11 mm	40 mm	19 mm	0.06 kg	RISE
EL14C13N	14 mm	25 mm	18 mm	42 mm	21 mm	0.12 kg	RISE
EL16C13N	16 mm	25 mm	18 mm	45 mm	24 mm	0.11 kg	RISE
EL18C13N	18 mm	30 mm	24 mm	50 mm	29 mm	0.2 kg	–
EL20C13N	20 mm	30 mm	22 mm	59 mm	35 mm	0.22 kg	RISE
EL22C13N	22 mm	35 mm	16 mm	65 mm	37 mm	0.32 kg	–
EL25C13N	25 mm	40 mm	24 mm	68 mm	40 mm	0.45 kg	RISE
EL28C13N	28 mm	40 mm	16 mm	74 mm	42 mm	0.41 kg	–
EL32C13N	32 mm	50 mm	32 mm	75 mm	45 mm	0.75 kg	RISE
EL36C13N	36 mm	50 mm	22 mm	87 mm	52 mm	0.74 kg	–
EL38C13N	38 mm	60 mm	38 mm	85 mm	53 mm	1.24 kg	–
EL40C13N	40 mm	60 mm	32 mm	91 mm	57 mm	1.25 kg	RISE
EL50TC13N	50 mm	70 mm	29 mm	117 mm	70 mm	1.94 kg	–

C15 WELDABLE HALF COUPLER



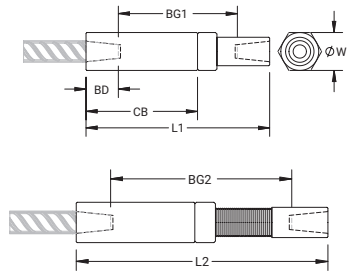
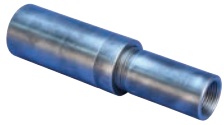
- Designed for connecting reinforcing bar perpendicular to structural steel sections or plates
- Internally taper threaded on one end, with the other end prepared for full penetration welding
- Machined from weldable grades of steel
- Slim design maintains concrete cover

Catalog Number	Rebar Size, Metric	Diameter 1 Ø1	Diameter 2 Ø2	Length L	Bar Depth BD	Unit Weight	Certifications
EL10C15N	10 mm	20 mm	8 mm	37 mm	18 mm	0.06 kg	–
EL12C15N	12 mm	20 mm	10 mm	36 mm	19 mm	0.06 kg	CARES
EL14C15N	14 mm	25 mm	12 mm	41 mm	21 mm	0.1 kg	–
EL16C15N	16 mm	25 mm	13 mm	43 mm	24 mm	0.1 kg	CARES
EL18C15N	18 mm	25 mm	14 mm	48 mm	29 mm	0.1 kg	–
EL20C15N	20 mm	30 mm	15 mm	59 mm	35 mm	0.19 kg	CARES
EL22C15N	22 mm	35 mm	17 mm	62 mm	37 mm	0.29 kg	–
EL25C15N	25 mm	40 mm	20 mm	66 mm	40 mm	0.4 kg	CARES
EL28C15N	28 mm	40 mm	22 mm	67 mm	42 mm	0.36 kg	–
EL32C15N	32 mm	50 mm	26 mm	74 mm	45 mm	0.67 kg	CARES
EL36C15N	36 mm	60 mm	28 mm	84 mm	52 mm	1.14 kg	–
EL38C15N	38 mm	60 mm	30 mm	84 mm	53 mm	1.1 kg	–
EL40C15N	40 mm	60 mm	32 mm	88 mm	57 mm	1.1 kg	CARES
EL50TC15N	50 mm	75 mm	39 mm	110 mm	83 mm	2.17 kg	CARES

nVent LENTON Position Couplers

nVent LENTON Position Couplers are designed to splice two curved, bent, or straight bars of the same diameter, when neither bar can be rotated.

NVENT LENTON POSITION COUPLERS - P13L

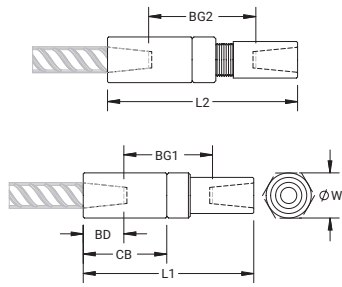
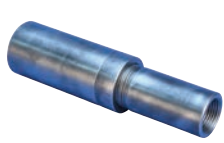


- Adjustability in the female end of the coupler allows the coupler to extend out to meet the taper-threaded reinforcing bar
- For use with BS EN 10080, BS 4449 and DIN 488 rebar

Catalog Number	Rebar Size, Metric	Diameter Ø	Length 1 L1	Length 2 L2	Bar Depth BD	Bar Gap 1 BG1	Bar Gap 2 BG2	Coupler Body CB	Unit Weight	Certifications
EL10P13LN	10 mm	25 mm	120 mm	155 mm	18 mm	84 mm	119 mm	70 mm	0.36 kg	AFCAB, DIBt, TZUS, Kontrollrådet, RISE, ITB, ACRS
EL12P13LN	12 mm	25 mm	124 mm	159 mm	19 mm	86 mm	121 mm	75 mm	0.36 kg	AFCAB, CARES, DIBt, KOMO, TZUS, Kontrollrådet, RISE, ITB, ACRS
EL14P13LN	14 mm	25 mm	134 mm	172 mm	21 mm	92 mm	130 mm	82 mm	0.37 kg	AFCAB, CARES, DIBt, KOMO, TZUS, Kontrollrådet, RISE, ITB, ACRS
EL16P13LN	16 mm	30 mm	144 mm	186 mm	24 mm	96 mm	138 mm	89 mm	0.59 kg	AFCAB, CARES, DIBt, KOMO, TZUS, Kontrollrådet, RISE, ITB, ACRS
EL18P13LN	18 mm	35 mm	162 mm	208 mm	29 mm	104 mm	150 mm	101 mm	0.85 kg	TZUS, ITB, ACRS
EL20P13LN	20 mm	35 mm	199 mm	260 mm	35 mm	129 mm	190 mm	126 mm	1.09 kg	AFCAB, CARES, DIBt, KOMO, TZUS, Kontrollrådet, RISE, ITB, ACRS
EL22P13LN	22 mm	40 mm	210 mm	273 mm	37 mm	136 mm	199 mm	132 mm	1.55 kg	TZUS, ITB, ACRS
EL25P13LN	25 mm	45 mm	221 mm	287 mm	40 mm	140 mm	207 mm	140 mm	1.94 kg	AFCAB, CARES, DIBt, KOMO, TZUS, Kontrollrådet, RISE, ITB, ACRS
EL28P13LN	28 mm	50 mm	229 mm	298 mm	42 mm	145 mm	214 mm	147 mm	2.53 kg	DIBt, KOMO, TZUS, ITB, ACRS
EL30P13LN	30 mm	55 mm	262 mm	340 mm	52 mm	158 mm	236 mm	169 mm	3.35 kg	ACRS
EL32P13LN	32 mm	60 mm	249 mm	321 mm	45 mm	159 mm	231 mm	156 mm	3.96 kg	AFCAB, CARES, DIBt, KOMO, TZUS, Kontrollrådet, RISE, ITB, ACRS
EL34P13LN	34 mm	60 mm	280 mm	362 mm	55 mm	170 mm	252 mm	177 mm	4.28 kg	ACRS
EL36P13LN	36 mm	65 mm	271 mm	349 mm	52 mm	167 mm	245 mm	172 mm	5.01 kg	TZUS, ACRS
EL38P13LN	38 mm	70 mm	277 mm	357 mm	53 mm	171 mm	251 mm	175 mm	6.05 kg	ACRS
EL40P13LN	40 mm	70 mm	290 mm	374 mm	57 mm	176 mm	260 mm	184 mm	6.18 kg	AFCAB, CARES, DIBt, TZUS, RISE, ITB, ACRS
EL50TP13LN	50 mm	90 mm	358 mm	454 mm	70 mm	218 mm	314 mm	224 mm	11.97 kg	CARES

nVent LENTON Position Couplers

NVENT LENTON POSITION COUPLERS - P14L

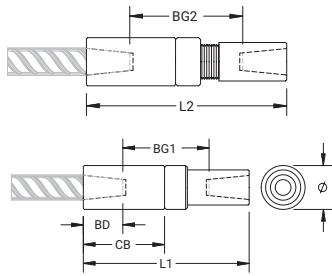
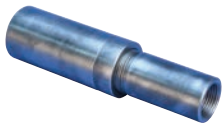


- For use with BS EN 10080, BS 4449 and DIN 488 rebar

Catalog Number	Rebar Size, Metric	Diameter Ø	Length 1 L1	Length 2 L2	Bar Depth BD	Bar Gap 1 BG1	Bar Gap 2 BG2	Coupler Body CB	Unit Weight	Certifications
EL10P14LN	10 mm	25 mm	94 mm	101 mm	18 mm	58 mm	65 mm	42 mm	0.27 kg	AFCAB, DIBt, TZUS, Kontrollrådet, RISE, ITB, ACRS
EL12P14LN	12 mm	25 mm	98 mm	105 mm	19 mm	60 mm	67 mm	46 mm	0.26 kg	AFCAB, CARES, DIBt, KOMO, TZUS, Kontrollrådet, RISE, ITB, ACRS
EL14P14LN	14 mm	25 mm	105 mm	112 mm	21 mm	63 mm	70 mm	51 mm	0.26 kg	AFCAB, CARES, DIBt, KOMO, TZUS, Kontrollrådet, RISE, ITB, ACRS
EL16P14LN	16 mm	30 mm	112 mm	119 mm	24 mm	64 mm	71 mm	54 mm	0.44 kg	DCL, AFCAB, CARES, DIBt, KOMO, TZUS, Kontrollrådet, RISE, ITB, ACRS
EL18P14LN	18 mm	35 mm	125 mm	131 mm	29 mm	67 mm	73 mm	61 mm	0.58 kg	TZUS, ITB, ACRS
EL20P14LN	20 mm	35 mm	152 mm	163 mm	35 mm	82 mm	93 mm	76 mm	0.76 kg	DCL, AFCAB, CARES, DIBt, KOMO, TZUS, Kontrollrådet, RISE, ITB, ACRS
EL22P14LN	22 mm	40 mm	160 mm	172 mm	37 mm	86 mm	98 mm	80 mm	1.09 kg	TZUS, ITB, ACRS
EL25P14LN	25 mm	45 mm	169 mm	180 mm	40 mm	89 mm	100 mm	86 mm	1.32 kg	DCL, AFCAB, CARES, DIBt, KOMO, TZUS, Kontrollrådet, RISE, ITB, ACRS
EL28P14LN	28 mm	50 mm	175 mm	187 mm	42 mm	91 mm	103 mm	90 mm	1.72 kg	DIBt, KOMO, TZUS, ITB, ACRS
EL30P14LN	30 mm	55 mm	198 mm	209 mm	52 mm	94 mm	105 mm	102 mm	2.19 kg	ACRS
EL32P14LN	32 mm	60 mm	192 mm	203 mm	45 mm	102 mm	113 mm	96 mm	2.72 kg	DCL, AFCAB, CARES, DIBt, KOMO, TZUS, Kontrollrådet, RISE, ITB, ACRS
EL34P14LN	34 mm	60 mm	213 mm	224 mm	55 mm	103 mm	114 mm	107 mm	2.83 kg	ACRS
EL36P14LN	36 mm	65 mm	207 mm	218 mm	52 mm	103 mm	114 mm	105 mm	3.37 kg	TZUS, ACRS
EL38P14LN	38 mm	70 mm	212 mm	223 mm	53 mm	106 mm	117 mm	106 mm	4.12 kg	
EL40P14LN	40 mm	70 mm	221 mm	232 mm	57 mm	107 mm	118 mm	112 mm	4.14 kg	DCL, AFCAB, CARES, DIBt, TZUS, RISE, ITB, ACRS
EL50TP14LN	50 mm	90 mm	287 mm	308 mm	70 mm	147 mm	168 mm	148 mm	8.52 kg	DCL, CARES

nVent LENTON Position Couplers

NVENT LENTON POSITION COUPLERS - P24L



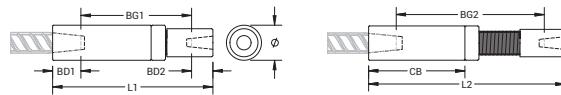
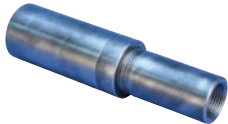
- The performance of the spliced connection is designed to meet the bars' specified ultimate tensile strength of 792 MPa.

Catalog Number	Rebar Size, Metric	Diameter Ø	Length 1 L1	Length 2 L2	Bar Depth BD	Bar Gap 1 BG1	Bar Gap 2 BG2	Coupler Body CB	Unit Weight
EL22P24L	22 mm	44 mm	172 mm	188 mm	37 mm	98 mm	114 mm	92 mm	1.55 kg
EL25P24L	25 mm	48 mm	183 mm	199 mm	40 mm	103 mm	119 mm	98 mm	1.87 kg
EL28P24L	28 mm	57 mm	192 mm	208 mm	42 mm	108 mm	124 mm	104 mm	2.85 kg
EL32P24L	32 mm	60 mm	208 mm	224 mm	45 mm	118 mm	134 mm	110 mm	3.39 kg
EL36P24L	36 mm	70 mm	227 mm	243 mm	52 mm	124 mm	140 mm	120 mm	5.1 kg

nVent LENTON Position Transition Couplers

nVent LENTON Position Transition Couplers are designed to splice two curved, bent, or straight bars of different diameters.

NVENT LENTON POSITION TRANSITION COUPLERS - P13L



- Adjustability in the female end of the coupler allows the coupler to extend out to meet the taper-threaded reinforcing bar
- For use with BS EN 10080, BS 4449 and DIN 488 rebar

Catalog Number	Rebar Size, Metric	Diameter Ø	Length 1 L1	Length 2 L2	Bar Depth 1 BD1	Bar Depth 2 BD2	Bar Gap 1 BG1	Bar Gap 2 BG2	Coupler Body CB	Certifications
EL1210P13LN	12 mm, 10 mm	25 mm	123 mm	159 mm	19 mm	18 mm	86 mm	122 mm	75 mm	DIBt, Kontrollrådet, RISE, ITB
EL1412P13LN	14 mm, 12 mm	25 mm	133 mm	172 mm	21 mm	19 mm	93 mm	132 mm	82 mm	DIBt, Kontrollrådet, RISE, ITB
EL1410P13LN	14 mm, 10 mm	25 mm	133 mm	172 mm	21 mm	18 mm	94 mm	133 mm	82 mm	Kontrollrådet, ITB
EL1614P13LN	16 mm, 14 mm	30 mm	144 mm	186 mm	24 mm	21 mm	99 mm	141 mm	89 mm	DIBt, Kontrollrådet, RISE, ITB
EL1610P13LN	16 mm, 10 mm	30 mm	144 mm	186 mm	24 mm	18 mm	102 mm	144 mm	89 mm	Kontrollrådet, ITB
EL1612P13LN	16 mm, 12 mm	30 mm	144 mm	186 mm	24 mm	19 mm	101 mm	143 mm	89 mm	Kontrollrådet, RISE, ITB

nVent LENTON Position Transition Couplers

Catalog Number	Rebar Size, Metric	Diameter Ø	Length 1 L1	Length 2 L2	Bar Depth 1 BD1	Bar Depth 2 BD2	Bar Gap 1 BG1	Bar Gap 2 BG2	Coupler Body CB	Certifications
EL1810P13LN	18 mm, 10 mm	35 mm	161 mm	208 mm	29 mm	18 mm	114 mm	161 mm	101 mm	ITB
EL1812P13LN	18 mm, 12 mm	35 mm	161 mm	208 mm	29 mm	19 mm	113 mm	160 mm	101 mm	ITB
EL1814P13LN	18 mm, 14 mm	35 mm	161 mm	208 mm	29 mm	21 mm	111 mm	158 mm	101 mm	ITB
EL1816P13LN	18 mm, 16 mm	35 mm	161 mm	208 mm	29 mm	24 mm	108 mm	155 mm	101 mm	ITB
EL2010P13LN	20 mm, 10 mm	35 mm	197 mm	260 mm	35 mm	18 mm	144 mm	207 mm	126 mm	Kontrollrådet, ITB
EL2012P13LN	20 mm, 12 mm	35 mm	197 mm	260 mm	35 mm	19 mm	143 mm	206 mm	126 mm	Kontrollrådet, RISE, ITB
EL2014P13LN	20 mm, 14 mm	35 mm	197 mm	260 mm	35 mm	21 mm	141 mm	204 mm	126 mm	Kontrollrådet, RISE, ITB
EL2016P13LN	20 mm, 16 mm	35 mm	197 mm	260 mm	35 mm	24 mm	138 mm	201 mm	126 mm	DIBt, Kontrollrådet, RISE, ITB
EL2018P13LN	20 mm, 18 mm	35 mm	197 mm	260 mm	35 mm	29 mm	133 mm	196 mm	126 mm	ITB
EL2212P13LN	22 mm, 12 mm	40 mm	208 mm	273 mm	37 mm	19 mm	152 mm	217 mm	132 mm	ITB
EL2214P13LN	22 mm, 14 mm	40 mm	208 mm	273 mm	37 mm	21 mm	150 mm	215 mm	132 mm	ITB
EL2216P13LN	22 mm, 16 mm	40 mm	208 mm	273 mm	37 mm	24 mm	147 mm	212 mm	132 mm	ITB
EL2218P13LN	22 mm, 18 mm	40 mm	208 mm	273 mm	37 mm	29 mm	142 mm	207 mm	132 mm	ITB
EL2220P13LN	22 mm, 20 mm	40 mm	208 mm	273 mm	37 mm	35 mm	136 mm	201 mm	132 mm	ITB
EL2512P13LN	25 mm, 12 mm	45 mm	219 mm	287 mm	40 mm	19 mm	160 mm	228 mm	140 mm	Kontrollrådet, RISE, ITB
EL2514P13LN	25 mm, 14 mm	45 mm	219 mm	287 mm	40 mm	21 mm	158 mm	226 mm	140 mm	Kontrollrådet, RISE, ITB
EL2516P13LN	25 mm, 16 mm	45 mm	219 mm	287 mm	40 mm	24 mm	155 mm	223 mm	140 mm	Kontrollrådet, RISE, ITB
EL2518P13LN	25 mm, 18 mm	45 mm	219 mm	287 mm	40 mm	29 mm	150 mm	218 mm	140 mm	ITB
EL2520P13LN	25 mm, 20 mm	45 mm	219 mm	287 mm	40 mm	35 mm	144 mm	212 mm	140 mm	DIBt, Kontrollrådet, RISE, ITB
EL2522P13LN	25 mm, 22 mm	45 mm	219 mm	287 mm	40 mm	37 mm	142 mm	210 mm	140 mm	ITB
EL2814P13LN	28 mm, 14 mm	50 mm	228 mm	298 mm	42 mm	21 mm	165 mm	235 mm	147 mm	ITB
EL2816P13LN	28 mm, 16 mm	50 mm	228 mm	298 mm	42 mm	24 mm	162 mm	232 mm	147 mm	ITB
EL2818P13LN	28 mm, 18 mm	50 mm	228 mm	298 mm	42 mm	29 mm	157 mm	227 mm	147 mm	ITB
EL2820P13LN	28 mm, 20 mm	50 mm	228 mm	298 mm	42 mm	35 mm	151 mm	221 mm	147 mm	ITB

nVent LENTON Position Transition Couplers

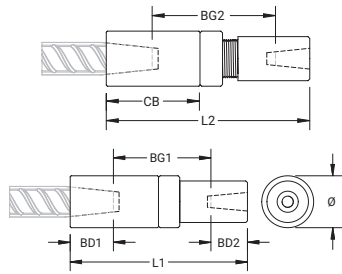
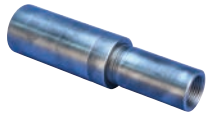
Catalog Number	Rebar Size, Metric	Diameter Ø	Length 1 L1	Length 2 L2	Bar Depth 1 BD1	Bar Depth 2 BD2	Bar Gap 1 BG1	Bar Gap 2 BG2	Coupler Body CB	Certifications
EL2822P13LN	28 mm, 22 mm	50 mm	228 mm	298 mm	42 mm	37 mm	149 mm	219 mm	147 mm	ITB
EL2825P13LN	28 mm, 25 mm	50 mm	228 mm	298 mm	42 mm	40 mm	146 mm	216 mm	147 mm	DIBt, ITB
EL3016P13LN	30 mm, 16 mm	55 mm	260 mm	340 mm	52 mm	24 mm	184 mm	264 mm	169 mm	-
EL3018P13LN	30 mm, 18 mm	55 mm	260 mm	340 mm	52 mm	29 mm	179 mm	259 mm	169 mm	-
EL3020P13LN	30 mm, 20 mm	55 mm	260 mm	340 mm	52 mm	35 mm	173 mm	253 mm	169 mm	-
EL3022P13LN	30 mm, 22 mm	55 mm	260 mm	340 mm	52 mm	37 mm	171 mm	251 mm	169 mm	-
EL3025P13LN	30 mm, 25 mm	55 mm	260 mm	340 mm	52 mm	40 mm	168 mm	248 mm	169 mm	-
EL3028P13LN	30 mm, 28 mm	55 mm	260 mm	340 mm	52 mm	42 mm	166 mm	246 mm	169 mm	-
EL3218P13LN	32 mm, 18 mm	60 mm	247 mm	321 mm	45 mm	29 mm	173 mm	247 mm	156 mm	ITB
EL3220P13LN	32 mm, 20 mm	60 mm	247 mm	321 mm	45 mm	35 mm	167 mm	241 mm	156 mm	Kontrollrådet, RISE, ITB
EL3222P13LN	32 mm, 22 mm	60 mm	247 mm	321 mm	45 mm	37 mm	165 mm	239 mm	156 mm	ITB
EL3225P13LN	32 mm, 25 mm	60 mm	247 mm	321 mm	45 mm	40 mm	162 mm	236 mm	156 mm	Kontrollrådet, RISE, ITB
EL3228P13LN	32 mm, 28 mm	60 mm	247 mm	321 mm	45 mm	42 mm	160 mm	234 mm	156 mm	DIBt, ITB
EL3230P13LN	32 mm, 30 mm	60 mm	247 mm	321 mm	45 mm	52 mm	150 mm	224 mm	156 mm	-
EL3420P13LN	34 mm, 20 mm	60 mm	278 mm	362 mm	55 mm	35 mm	188 mm	272 mm	177 mm	-
EL3422P13LN	34 mm, 22 mm	60 mm	278 mm	362 mm	55 mm	37 mm	186 mm	270 mm	177 mm	-
EL3425P13LN	34 mm, 25 mm	60 mm	278 mm	362 mm	55 mm	40 mm	183 mm	267 mm	177 mm	-
EL3428P13LN	34 mm, 28 mm	60 mm	278 mm	362 mm	55 mm	42 mm	181 mm	265 mm	177 mm	-
EL3430P13LN	34 mm, 30 mm	60 mm	278 mm	362 mm	55 mm	52 mm	171 mm	255 mm	177 mm	-
EL3432P13LN	34 mm, 32 mm	60 mm	278 mm	362 mm	55 mm	45 mm	178 mm	262 mm	177 mm	-
EL3622P13LN	36 mm, 22 mm	65 mm	269 mm	349 mm	52 mm	37 mm	180 mm	260 mm	172 mm	-
EL3625P13LN	36 mm, 25 mm	65 mm	269 mm	349 mm	52 mm	40 mm	177 mm	257 mm	172 mm	-
EL3628P13LN	36 mm, 28 mm	65 mm	269 mm	349 mm	52 mm	42 mm	175 mm	255 mm	172 mm	-
EL3630P13LN	36 mm, 30 mm	65 mm	269 mm	349 mm	52 mm	52 mm	165 mm	245 mm	172 mm	-

nVent LENTON Position Transition Couplers

Catalog Number	Rebar Size, Metric	Diameter Ø	Length 1 L1	Length 2 L2	Bar Depth 1 BD1	Bar Depth 2 BD2	Bar Gap 1 BG1	Bar Gap 2 BG2	Coupler Body CB	Certifications
EL3632P13LN	36 mm, 32 mm	65 mm	269 mm	349 mm	52 mm	45 mm	172 mm	252 mm	172 mm	-
EL3634P13LN	36 mm, 34 mm	65 mm	269 mm	349 mm	52 mm	55 mm	162 mm	242 mm	172 mm	-
EL3825P13LN	38 mm, 25 mm	70 mm	276 mm	357 mm	53 mm	40 mm	183 mm	264 mm	175 mm	-
EL3828P13LN	38 mm, 28 mm	70 mm	276 mm	357 mm	53 mm	42 mm	181 mm	262 mm	175 mm	-
EL3832P13LN	38 mm, 32 mm	70 mm	276 mm	357 mm	53 mm	45 mm	178 mm	259 mm	175 mm	-
EL3830P13LN	38 mm, 30 mm	70 mm	276 mm	357 mm	53 mm	52 mm	171 mm	252 mm	175 mm	-
EL3836P13LN	38 mm, 36 mm	70 mm	276 mm	357 mm	53 mm	52 mm	171 mm	252 mm	175 mm	-
EL3834P13LN	38 mm, 34 mm	70 mm	276 mm	357 mm	53 mm	55 mm	168 mm	249 mm	175 mm	-
EL4025P13LN	40 mm, 25 mm	70 mm	288 mm	374 mm	57 mm	40 mm	191 mm	277 mm	184 mm	-
EL4028P13LN	40 mm, 28 mm	70 mm	288 mm	374 mm	57 mm	42 mm	189 mm	275 mm	184 mm	ITB
EL4030P13LN	40 mm, 30 mm	70 mm	288 mm	374 mm	57 mm	52 mm	179 mm	265 mm	184 mm	-
EL4032P13LN	40 mm, 32 mm	70 mm	288 mm	374 mm	57 mm	45 mm	186 mm	272 mm	184 mm	DIBt, RISE, ITB
EL4034P13LN	40 mm, 34 mm	70 mm	288 mm	374 mm	57 mm	55 mm	176 mm	262 mm	184 mm	-
EL4036P13LN	40 mm, 36 mm	70 mm	288 mm	374 mm	57 mm	52 mm	179 mm	265 mm	184 mm	-
EL4038P13LN	40 mm, 38 mm	70 mm	288 mm	374 mm	57 mm	53 mm	178 mm	264 mm	184 mm	-
EL50T32P13LN	50 mm, 32 mm	90 mm	355 mm	454 mm	70 mm	45 mm	240 mm	339 mm	224 mm	-
EL50T36P13LN	50 mm, 36 mm	90 mm	355 mm	454 mm	70 mm	52 mm	233 mm	332 mm	224 mm	-
EL50T38P13LN	50 mm, 38 mm	90 mm	355 mm	454 mm	70 mm	53 mm	232 mm	331 mm	224 mm	-
EL50T34P13LN	50 mm, 34 mm	90 mm	355 mm	454 mm	70 mm	55 mm	230 mm	329 mm	224 mm	-
EL50T40P13LN	50 mm, 40 mm	90 mm	355 mm	454 mm	70 mm	57 mm	228 mm	327 mm	224 mm	CARES

nVent LENTON Position Transition Couplers

NVENT LENTON POSITION TRANSITION COUPLERS - P14



- For use with state European bar types

Catalog Number	Rebar Size, Metric	Diameter Ø	Length 1 L1	Length 2 L2	Bar Depth 1 BD1	Bar Depth 2 BD2	Bar Gap 1 BG1	Bar Gap 2 BG2	Coupler Body CB	Certifications
EL1210P14LN	12 mm, 10 mm	25 mm	98 mm	105 mm	19 mm	18 mm	61 mm	68 mm	46 mm	DIBt, Kontrollrådet, RISE, ITB
EL1412P14LN	14 mm, 12 mm	25 mm	105 mm	112 mm	21 mm	19 mm	49 mm	56 mm	51 mm	DIBt, Kontrollrådet, RISE, ITB
EL1410P14LN	14 mm, 10 mm	25 mm	105 mm	112 mm	21 mm	18 mm	66 mm	73 mm	51 mm	Kontrollrådet, ITB
EL1614P14LN	16 mm, 14 mm	30 mm	113 mm	119 mm	24 mm	21 mm	47 mm	53 mm	54 mm	DIBt, Kontrollrådet, RISE, ITB
EL1612P14LN	16 mm, 12 mm	30 mm	113 mm	119 mm	24 mm	19 mm	49 mm	55 mm	54 mm	Kontrollrådet, RISE, ITB
EL1610P14LN	16 mm, 10 mm	30 mm	113 mm	119 mm	24 mm	18 mm	71 mm	77 mm	54 mm	Kontrollrådet, ITB
EL1816P14LN	18 mm, 16 mm	35 mm	125 mm	131 mm	29 mm	24 mm	44 mm	50 mm	61 mm	ITB
EL1814P14LN	18 mm, 14 mm	35 mm	125 mm	131 mm	29 mm	21 mm	48 mm	54 mm	61 mm	ITB
EL1812P14LN	18 mm, 12 mm	35 mm	125 mm	131 mm	29 mm	19 mm	61 mm	67 mm	61 mm	ITB
EL1810P14LN	18 mm, 10 mm	35 mm	125 mm	131 mm	29 mm	18 mm	78 mm	84 mm	61 mm	ITB
EL2010P14LN	20 mm, 10 mm	35 mm	152 mm	163 mm	35 mm	18 mm	99 mm	110 mm	76 mm	Kontrollrådet, ITB
EL2014P14LN	20 mm, 14 mm	35 mm	152 mm	163 mm	35 mm	21 mm	61 mm	72 mm	76 mm	Kontrollrådet, RISE, ITB
EL2012P14LN	20 mm, 12 mm	35 mm	152 mm	163 mm	35 mm	19 mm	88 mm	99 mm	76 mm	Kontrollrådet, RISE, ITB
EL2018P14LN	20 mm, 18 mm	35 mm	152 mm	163 mm	35 mm	29 mm	66 mm	77 mm	76 mm	ITB
EL2016P14LN	20 mm, 16 mm	35 mm	152 mm	163 mm	35 mm	24 mm	58 mm	69 mm	76 mm	DIBt, Kontrollrådet, RISE, ITB
EL2212P14LN	22 mm, 12 mm	40 mm	160 mm	172 mm	37 mm	19 mm	104 mm	116 mm	80 mm	ITB
EL2214P14LN	22 mm, 14 mm	40 mm	160 mm	172 mm	37 mm	21 mm	82 mm	94 mm	80 mm	ITB
EL2216P14LN	22 mm, 16 mm	40 mm	160 mm	172 mm	37 mm	24 mm	96 mm	108 mm	80 mm	ITB
EL2218P14LN	22 mm, 18 mm	40 mm	160 mm	172 mm	37 mm	29 mm	91 mm	103 mm	80 mm	ITB
EL2220P14LN	22 mm, 20 mm	40 mm	160 mm	172 mm	37 mm	35 mm	68 mm	80 mm	80 mm	ITB

nVent LENTON Position Transition Couplers

Catalog Number	Rebar Size, Metric	Diameter Ø	Length 1 L1	Length 2 L2	Bar Depth 1 BD1	Bar Depth 2 BD2	Bar Gap 1 BG1	Bar Gap 2 BG2	Coupler Body CB	Certifications
EL2512P14LN	25 mm, 12 mm	45 mm	169 mm	180 mm	40 mm	19 mm	110 mm	121 mm	86 mm	Kontrollrådet, RISE, ITB
EL2514P14LN	25 mm, 14 mm	45 mm	169 mm	180 mm	40 mm	21 mm	103 mm	114 mm	86 mm	Kontrollrådet, RISE, ITB
EL2516P14LN	25 mm, 16 mm	45 mm	169 mm	180 mm	40 mm	24 mm	75 mm	86 mm	86 mm	Kontrollrådet, RISE, ITB
EL2518P14LN	25 mm, 18 mm	45 mm	169 mm	180 mm	40 mm	29 mm	105 mm	116 mm	86 mm	ITB
EL2520P14LN	25 mm, 20 mm	45 mm	169 mm	180 mm	40 mm	35 mm	115 mm	126 mm	86 mm	DIBt, Kontrollrådet, RISE, ITB
EL2522P14LN	25 mm, 22 mm	45 mm	169 mm	180 mm	40 mm	37 mm	111 mm	122 mm	86 mm	ITB
EL2814P14LN	28 mm, 14 mm	50 mm	175 mm	187 mm	42 mm	21 mm	112 mm	124 mm	90 mm	ITB
EL2816P14LN	28 mm, 16 mm	50 mm	175 mm	187 mm	42 mm	24 mm	127 mm	139 mm	90 mm	ITB
EL2818P14LN	28 mm, 18 mm	50 mm	175 mm	187 mm	42 mm	29 mm	122 mm	134 mm	90 mm	ITB
EL2820P14LN	28 mm, 20 mm	50 mm	175 mm	187 mm	42 mm	35 mm	116 mm	128 mm	90 mm	ITB
EL2822P14LN	28 mm, 22 mm	50 mm	175 mm	187 mm	42 mm	37 mm	109 mm	121 mm	90 mm	ITB
EL2825P14LN	28 mm, 25 mm	50 mm	175 mm	187 mm	42 mm	40 mm	106 mm	118 mm	90 mm	DIBt, ITB
EL3016P14LN	30 mm, 16 mm	55 mm	198 mm	209 mm	52 mm	24 mm	122 mm	133 mm	102 mm	-
EL3018P14LN	30 mm, 18 mm	55 mm	198 mm	209 mm	52 mm	29 mm	140 mm	151 mm	102 mm	-
EL3020P14LN	30 mm, 20 mm	55 mm	198 mm	209 mm	52 mm	35 mm	128 mm	139 mm	102 mm	-
EL3022P14LN	30 mm, 22 mm	55 mm	198 mm	209 mm	52 mm	37 mm	126 mm	137 mm	102 mm	-
EL3025P14LN	30 mm, 25 mm	55 mm	198 mm	209 mm	52 mm	40 mm	123 mm	134 mm	102 mm	-
EL3028P14LN	30 mm, 28 mm	55 mm	198 mm	209 mm	52 mm	42 mm	121 mm	132 mm	102 mm	-
EL3218P14LN	32 mm, 18 mm	60 mm	192 mm	203 mm	45 mm	29 mm	118 mm	129 mm	96 mm	ITB
EL3220P14LN	32 mm, 20 mm	60 mm	192 mm	203 mm	45 mm	35 mm	120 mm	131 mm	96 mm	Kontrollrådet, RISE, ITB
EL3222P14LN	32 mm, 22 mm	60 mm	192 mm	203 mm	45 mm	37 mm	118 mm	129 mm	96 mm	ITB
EL3225P14LN	32 mm, 25 mm	60 mm	192 mm	203 mm	45 mm	40 mm	115 mm	126 mm	96 mm	Kontrollrådet, RISE, ITB
EL3228P14LN	32 mm, 28 mm	60 mm	192 mm	203 mm	45 mm	42 mm	113 mm	124 mm	96 mm	DIBt, ITB
EL3230P14LN	32 mm, 30 mm	60 mm	192 mm	203 mm	45 mm	52 mm	103 mm	114 mm	96 mm	-
EL3420P14LN	34 mm, 20 mm	60 mm	213 mm	224 mm	55 mm	35 mm	123 mm	134 mm	107 mm	-
EL3422P14LN	34 mm, 22 mm	60 mm	213 mm	224 mm	55 mm	37 mm	136 mm	147 mm	107 mm	-

nVent LENTON Position Transition Couplers

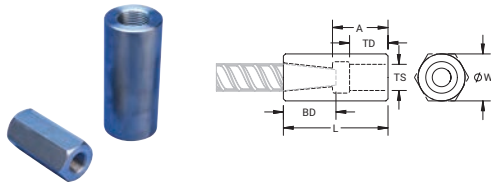
Catalog Number	Rebar Size, Metric	Diameter Ø	Length 1 L1	Length 2 L2	Bar Depth 1 BD1	Bar Depth 2 BD2	Bar Gap 1 BG1	Bar Gap 2 BG2	Coupler Body CB	Certifications
EL3425P14LN	34 mm, 25 mm	60 mm	213 mm	224 mm	55 mm	40 mm	133 mm	144 mm	107 mm	-
EL3428P14LN	34 mm, 28 mm	60 mm	213 mm	224 mm	55 mm	42 mm	131 mm	142 mm	107 mm	-
EL3430P14LN	34 mm, 30 mm	60 mm	213 mm	224 mm	55 mm	52 mm	121 mm	132 mm	107 mm	-
EL3432P14LN	34 mm, 32 mm	60 mm	213 mm	224 mm	55 mm	45 mm	128 mm	139 mm	107 mm	-
EL3622P14LN	36 mm, 22 mm	65 mm	207 mm	218 mm	52 mm	37 mm	118 mm	129 mm	105 mm	-
EL3625P14LN	36 mm, 25 mm	65 mm	207 mm	218 mm	52 mm	40 mm	125 mm	136 mm	105 mm	-
EL3628P14LN	36 mm, 28 mm	65 mm	207 mm	218 mm	52 mm	42 mm	123 mm	134 mm	105 mm	-
EL3630P14LN	36 mm, 30 mm	65 mm	207 mm	218 mm	52 mm	52 mm	113 mm	124 mm	105 mm	-
EL3632P14LN	36 mm, 32 mm	65 mm	207 mm	218 mm	52 mm	45 mm	120 mm	131 mm	105 mm	-
EL3634P14LN	36 mm, 34 mm	65 mm	207 mm	218 mm	52 mm	55 mm	110 mm	121 mm	105 mm	-
EL3825P14LN	38 mm, 25 mm	70 mm	212 mm	223 mm	53 mm	40 mm	119 mm	130 mm	106 mm	-
EL3828P14LN	38 mm, 28 mm	70 mm	212 mm	223 mm	53 mm	42 mm	118 mm	129 mm	106 mm	-
EL3830P14LN	38 mm, 30 mm	70 mm	212 mm	223 mm	53 mm	52 mm	108 mm	119 mm	106 mm	-
EL3832P14LN	38 mm, 32 mm	70 mm	212 mm	223 mm	53 mm	45 mm	115 mm	126 mm	106 mm	-
EL3834P14LN	38 mm, 34 mm	70 mm	212 mm	223 mm	53 mm	55 mm	105 mm	116 mm	106 mm	-
EL3836P14LN	38 mm, 36 mm	70 mm	212 mm	223 mm	53 mm	52 mm	108 mm	119 mm	106 mm	-
EL4028P14LN	40 mm, 28 mm	70 mm	221 mm	232 mm	57 mm	42 mm	122 mm	133 mm	112 mm	ITB
EL4030P14LN	40 mm, 30 mm	70 mm	221 mm	232 mm	57 mm	52 mm	124 mm	135 mm	112 mm	-
EL4032P14LN	40 mm, 32 mm	70 mm	221 mm	232 mm	57 mm	45 mm	131 mm	142 mm	112 mm	DIBt, RISE, ITB
EL4034P14LN	40 mm, 34 mm	70 mm	221 mm	232 mm	57 mm	55 mm	121 mm	132 mm	112 mm	-
EL4036P14LN	40 mm, 36 mm	70 mm	221 mm	232 mm	57 mm	52 mm	124 mm	135 mm	112 mm	-
EL4038P14LN	40 mm, 38 mm	70 mm	221 mm	232 mm	57 mm	53 mm	123 mm	134 mm	112 mm	-
EL50T32P14LN	50 mm, 32 mm	90 mm	287 mm	308 mm	70 mm	45 mm	172 mm	193 mm	148 mm	-
EL50T36P14LN	50 mm, 36 mm	90 mm	287 mm	308 mm	70 mm	52 mm	180 mm	201 mm	148 mm	-
EL50T38P14LN	50 mm, 38 mm	90 mm	287 mm	308 mm	70 mm	53 mm	179 mm	200 mm	148 mm	-
EL50T34P14LN	50 mm, 34 mm	90 mm	287 mm	308 mm	70 mm	55 mm	177 mm	198 mm	148 mm	-
EL50T40P14LN	50 mm, 40 mm	90 mm	287 mm	308 mm	70 mm	57 mm	175 mm	196 mm	148 mm	-

nVent LENTON Parallel Bolt Couplers

nVent LENTON Parallel Bolt Couplers provide a full strength joint between a reinforcing steel bar (rebar) and a standard bolt or all-thread bar.

- ✓ Provides continuity between reinforcing bar
- ✓ May be used to anchor load-bearing equipment to foundations, columns or walls
- ✓ Machined from non-weldable grades of material, but can be tack welded
- ✓ Product available globally; for regional product requests, contact your local nVent LENTON Sales Representative

NVENT LENTON PARALLEL BOLT COUPLERS - S13



- For use with BS EN 10080, BS 4449 and DIN 488 rebar

Catalog Number	Rebar Size, Metric	Hex Width W	Diameter Ø	Length L	A	Bar Depth BD	Thread Size TS	Thread Depth TD	Unit Weight	Certifications
EL10S13N	10 mm	17 mm	–	53 mm	28 mm	18 mm	M12	14 mm	0.07 kg	AFCAB, DIBt, TZUS, ITB
EL12S13N	12 mm	22 mm	–	58 mm	33 mm	19 mm	M16	19 mm	0.12 kg	AFCAB, CARES, DIBt, TZUS, ITB
EL14S13N	14 mm	27 mm	–	63 mm	35 mm	21 mm	M18	21 mm	0.12 kg	AFCAB, CARES, DIBt, TZUS, ITB
EL16S13N	16 mm	27 mm	–	68 mm	37 mm	24 mm	M20	23 mm	0.21 kg	AFCAB, CARES, DIBt, TZUS, ITB
EL18S13N	18 mm	–	35 mm	75 mm	39 mm	29 mm	M22	25 mm	0.4 kg	TZUS, ITB
EL20S13N	20 mm	–	35 mm	98 mm	55 mm	35 mm	M24	27 mm	0.48 kg	AFCAB, CARES, DIBt, TZUS, ITB
EL22S13N	22 mm	–	40 mm	104 mm	58 mm	37 mm	M27	31 mm	0.67 kg	TZUS, ITB
EL25S13N	25 mm	–	45 mm	110 mm	61 mm	40 mm	M30	33 mm	0.9 kg	AFCAB, CARES, DIBt, TZUS, ITB
EL28S13N	28 mm	–	50 mm	115 mm	64 mm	42 mm	M33	37 mm	1.16 kg	DIBt, TZUS, ITB
EL30S13N	30 mm	–	55 mm	128 mm	67 mm	52 mm	M36	40 mm	1.62 kg	–
EL32S13N	32 mm	–	55 mm	125 mm	70 mm	45 mm	M39	43 mm	1.42 kg	AFCAB, CARES, DIBt, TZUS, ITB
EL34S13N	34 mm	–	55 mm	134 mm	70 mm	55 mm	M39	43 mm	1.52 kg	–
EL36S13N	36 mm	–	65 mm	134 mm	73 mm	52 mm	M42	46 mm	2.34 kg	TZUS
EL38S13N	38 mm	–	65 mm	139 mm	77 mm	53 mm	M45	49 mm	2.26 kg	–
EL40S13N	40 mm	–	65 mm	143 mm	77 mm	57 mm	M45	49 mm	2.28 kg	AFCAB, CARES, DIBt, TZUS, ITB
EL50TS13N	50 mm	–	85 mm	171 mm	88 mm	70 mm	M56	60 mm	4.83 kg	CARES
EL12S13AN	12 mm	–	45 mm	86 mm	61 mm	19 mm	M30	33 mm	1.02 kg	–
EL20S13AN	20 mm	–	35 mm	83 mm	39 mm	35 mm	M22	25 mm	0.43 kg	–
EL25S13AN	25 mm	–	45 mm	103 mm	55 mm	40 mm	M24	27 mm	0.9 kg	–
EL32S13AN	32 mm	–	55 mm	115 mm	61 mm	45 mm	M30	33 mm	1.54 kg	–
EL40S13AN	40 mm	–	65 mm	146 mm	80 mm	57 mm	M48	52 mm	2.18 kg	–
EL20S13BN	20 mm	–	35 mm	81 mm	37 mm	35 mm	M20	23 mm	0.44 kg	–
EL25S13BN	25 mm	–	45 mm	85 mm	37 mm	40 mm	M20	24 mm	0.8 kg	–
EL40S13BN	40 mm	–	65 mm	133 mm	67 mm	57 mm	M36	40 mm	2.41 kg	–
EL40S13CN	40 mm	–	65 mm	127 mm	61 mm	57 mm	M30	33 mm	2.44 kg	–

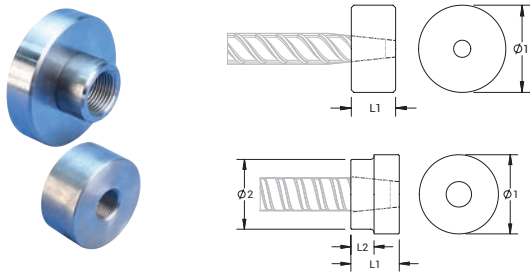
nVent LENTON Terminator and Mechanical Anchors

nVent LENTON Taper-Threaded Terminator and Mechanical Anchors incorporates the time-tested and field-proven nVent LENTON Tapered Thread to attach the “head” to the reinforcing bar.

✓ Replace conventional hooked reinforcing bar

✓ Product available globally; for regional product requests, contact your local nVent LENTON Sales Representative

NVENT LENTON MECHANICAL ANCHOR (TERMINATOR) - D14



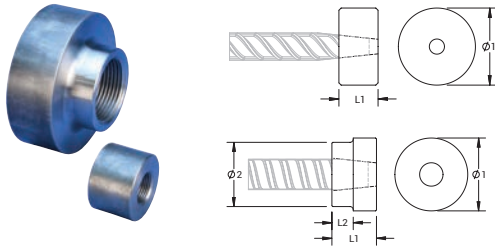
- Simplifies reinforcing bar placement and lowers placing costs
- Head area exceeds 10x bar area (net 9x)
- For use with BS EN 10080, BS 4449 and DIN 488 rebar

Catalog Number	Rebar Size, Metric	Diameter 1 Ø1	Diameter 2 Ø2	Length 1 L1	Length 2 L2	Unit Weight	Certifications
EL10D14N	10 mm	35 mm	–	18 mm	–	0.12 kg	AFCAB, DIBt, TZUS, ITB
EL12D14N	12 mm	45 mm	–	18 mm	–	0.21 kg	AFCAB, CARES, DIBt, TZUS, RISE, ITB
EL14D14N	14 mm	45 mm	–	21 mm	–	0.24 kg	AFCAB, CARES, DIBt, TZUS, RISE, ITB
EL16D14N	16 mm	55 mm	–	24 mm	–	0.41 kg	AFCAB, CARES, DIBt, TZUS, RISE, ITB
EL18D14N	18 mm	60 mm	–	29 mm	–	0.6 kg	TZUS, ITB
EL20D14N	20 mm	65 mm	–	35 mm	–	0.83 kg	AFCAB, CARES, DIBt, TZUS, RISE, ITB
EL22D14N	22 mm	70 mm	–	37 mm	–	1.03 kg	TZUS, ITB
EL25D14N	25 mm	80 mm	–	40 mm	–	1.43 kg	AFCAB, CARES, DIBt, TZUS, RISE, ITB
EL28D14N	28 mm	95 mm	80 mm	42 mm	25 mm	1.93 kg	DIBt, TZUS, ITB
EL30D14N	30 mm	95 mm	80 mm	52 mm	25 mm	2.48 kg	–
EL32D14N	32 mm	105 mm	80 mm	45 mm	25 mm	2.35 kg	–
EL34D14N	34 mm	110 mm	80 mm	55 mm	25 mm	3.23 kg	–
EL36D14N	36 mm	115 mm	80 mm	52 mm	25 mm	3.16 kg	TZUS
EL38D14N	38 mm	120 mm	80 mm	53 mm	25 mm	3.49 kg	–
EL40D14N	40 mm	130 mm	58 mm	57 mm	26 mm	6 kg	–
EL50TD14N	50 mm	160 mm	80 mm	71 mm	38 mm	11.25 kg	–
EL32D14WN	32 mm	80 mm	105 mm	45 mm	20 mm	2.11 kg	CARES
EL40D14WN	40 mm	80 mm	130 mm	57 mm	32 mm	3.82 kg	CARES
EL50TD14WN	50 mm	80 mm	160 mm	70 mm	45 mm	7.07 kg	CARES

For EL32D14WN, EL40D14WN and EL50TD14WN, Diameter 2 (Ø2) is larger than Diameter 1 (Ø1).

nVent LENTON Terminator and Mechanical Anchors

NVENT LENTON MECHANICAL ANCHOR (TERMINATOR) - D16



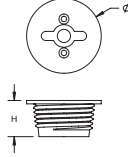
- Simplifies reinforcing bar placement and lowers placing costs
- Head area exceeds 5x bar area (net 4x)
- For use with BS EN 10080, BS 4449 and DIN 488 rebar

Catalog Number	Rebar Size, Metric	Diameter 1 Ø1	Diameter 2 Ø2	Length 1 L1	Length 2 L2	Unit Weight	Certifications
EL10D16N	10 mm	35 mm	–	18 mm	–	0.13 kg	–
EL12D16N	12 mm	35 mm	–	19 mm	–	0.12 kg	CARES, RISE
EL14D16N	14 mm	35 mm	–	22 mm	–	0.14 kg	CARES, RISE
EL16D16N	16 mm	36 mm	–	24 mm	–	0.16 kg	CARES, RISE
EL18D16N	18 mm	45 mm	–	30 mm	–	0.32 kg	–
EL20D16N	20 mm	45 mm	–	35 mm	–	0.37 kg	CARES, RISE
EL22D16N	22 mm	50 mm	–	38 mm	–	0.49 kg	–
EL25D16N	25 mm	60 mm	–	40 mm	–	0.76 kg	CARES, RISE
EL28D16N	28 mm	65 mm	–	42 mm	–	0.92 kg	–
EL30D16N	30 mm	70 mm	–	52 mm	–	1.34 kg	–
EL32D16N	32 mm	75 mm	–	46 mm	–	1.33 kg	CARES, RISE
EL34D16N	34 mm	80 mm	–	56 mm	–	1.86 kg	–
EL36D16N	36 mm	85 mm	80 mm	52 mm	25 mm	1.86 kg	–
EL38D16N	38 mm	85 mm	80 mm	54 mm	25 mm	1.87 kg	–
EL40D16WN	40 mm	80 mm	90 mm	57 mm	32 mm	2.11 kg	CARES
EL50TD16WN	50 mm	80 mm	115 mm	70 mm	45 mm	3.69 kg	CARES
EL40d16N	40 mm	90 mm	80 mm	58 mm	25 mm	2.15 kg	–
EL50Td16N	50 mm	115 mm	80 mm	71 mm	25 mm	3.84 kg	–

nVent LENTON Taper-Threaded Accessories

nVent LENTON Taper-Threaded Accessories and complimentary parts are designed to work with nVent LENTON Taper-Threaded products.

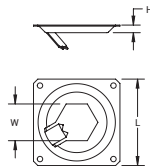
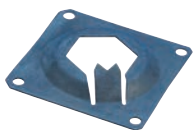
NVENT LENTON TAPERED PLASTIC SCREW-IN PLUG - CPP



- Designed for use with the A12, A22 and A32K Coupler families
- Designed to keep dirt, water and concrete slurry out of the coupler during the concrete pour
- Color coded for the appropriate coupler size

Catalog Number	Article Number	Rebar Size, Metric	Diameter Ø	Height H	Color
EL10CPPB100	153060	10 mm	17 mm	13 mm	Yellow
EL12CPPB100	153070	12 mm	17 mm	13 mm	Red
EL14CPPB100	153080	14 mm	22 mm	13 mm	Green
EL16CPPB100	153090	16 mm	22 mm	13 mm	Black
EL18CPPB100	153100	18 mm	27 mm	13 mm	White
EL20CPPB100	153110	20 mm	27 mm	13 mm	Yellow
EL22CPPB100	153120	22 mm	33 mm	16 mm	Blue
EL25CPPB100	153130	25 mm	33 mm	16 mm	Red
EL28CPPB100	153140	28 mm	37 mm	16 mm	Black
EL30CPPB100	153150	30 mm	37 mm	16 mm	White
EL32CPPB100	153160	32 mm	42 mm	16 mm	Yellow
EL36CPPB50	153180	36 mm	46 mm	16 mm	Blue
EL40CPPB50	153200	40 mm	52 mm	16 mm	Green
EL50CPPB40	153220	50 mm	64 mm	16 mm	Black

NVENT LENTON STEEL NAILING PLATE - HFF

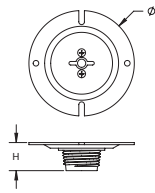


- Designed for use with the A12 coupler families
- Positively locks onto the hexagon-shaped coupler and allows easy attachment to form work

Catalog Number	Article Number	Rebar Size, Metric	Length L	Hex Width W	Height H
EL1012HFF	152840	10 mm, 12 mm	50 mm	17 mm	5 mm
EL1416HFF	152850	14 mm, 16 mm	50 mm	22 mm	5 mm
EL1820HFF	152860	18 mm, 20 mm	50 mm	27 mm	5 mm
EL2225HFF	154420	22 mm, 25 mm	70 mm	36 mm	5 mm

nVent LENTON Taper-Threaded Accessories

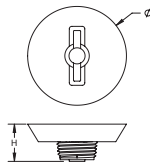
NVENT LENTON TAPERED SCREW-IN PLUG - CFF



- Designed for use with the A12, A22 and A32K Coupler families
- Designed to keep dirt, water and concrete slurry out of the coupler during the concrete pour
- Durable mounting plates allow for easy attachment to forms
- Color coded for the appropriate coupler size

Catalog Number	Article Number	Rebar Size, Metric	Diameter Ø	Height H	Color
EL22CFF	153880	22 mm	75 mm	18 mm	Blue
EL25CFF	153890	25 mm	75 mm	18 mm	Red
EL28CFF	153900	28 mm	75 mm	18 mm	Black
EL30CFF	153910	30 mm	75 mm	18 mm	White
EL32CFF	153920	32 mm	95 mm	18 mm	Yellow
EL36CFF	153925	36 mm	95 mm	18 mm	Blue
EL40CFF	153930	40 mm	95 mm	18 mm	Green
EL50CFF	154980	50 mm	95 mm	18 mm	Black

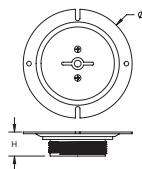
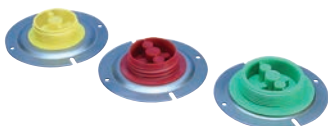
NVENT LENTON TAPERED PLASTIC SCREW-IN PLUG - CFFP



- Designed for use with the A12, A22 and A32K Coupler families
- Designed to keep dirt, water and concrete slurry out of the coupler during the concrete pour
- Durable mounting plates allow for easy attachment to forms
- Color coded for the appropriate coupler size

Catalog Number	Article Number	Rebar Size, Metric	Diameter Ø	Height H	Color
EL12CFFP	156010	12 mm	59 mm	23 mm	Red
EL14CFFP	156020	14 mm	59 mm	23 mm	Green
EL16CFFP	156030	16 mm	59 mm	23 mm	Black
EL20CFFP	156050	20 mm	59 mm	23 mm	Yellow
EL25CFFP	156060	25 mm	59 mm	23 mm	Red
EL28CFFP	156070	28 mm	59 mm	23 mm	Black

NVENT LENTON PARALLEL PLASTIC SCREW-IN PLUG - PFF

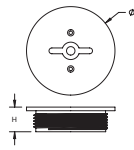


- Designed for use with the P13/P14 Coupler families
- Designed to keep dirt, water and concrete slurry out of the coupler during the concrete pour
- Durable mounting plates allow for easy attachment to forms
- Color coded for the appropriate coupler size

Catalog Number	Rebar Size, Metric	Diameter Ø	Height H	Color
EL12PFFN	12 mm	65 mm	17 mm	Red
EL16PFFN	16 mm	65 mm	20 mm	Black
EL20PFFN	20 mm	75 mm	20 mm	Yellow
EL22PFFN	22 mm	95 mm	20 mm	Blue
EL25PFFN	25 mm	95 mm	20 mm	Red
EL28PFFN	28 mm	95 mm	20 mm	Black
EL32PFFN	32 mm	95 mm	20 mm	Yellow
EL36PFFN	36 mm	95 mm	20 mm	Blue
EL40PFFN	40 mm	95 mm	20 mm	Green

nVent LENTON Taper-Threaded Accessories

NVENT LENTON PARALLEL PLASTIC SCREW-IN PLUG - PPP



- Designed for use with the P13/P14 Coupler families
- Designed to keep dirt, water and concrete slurry out of the coupler during the concrete pour
- Color coded for the appropriate coupler size

Catalog Number	Rebar Size, Metric	Diameter Ø	Height H	Color
EL12PPPNB100	12 mm	25 mm	13 mm	Red
EL16PPPNB100	16 mm	30 mm	13 mm	Black
EL20PPPNB100	20 mm	35 mm	16 mm	Yellow
EL22PPPNB100	22 mm	40 mm	16 mm	Blue
EL25PPPNB100	25 mm	45 mm	16 mm	Red
EL28PPPNB50	28 mm	50 mm	16 mm	Black
EL32PPPNB50	32 mm	60 mm	16 mm	Yellow
EL36PPPNB25	36 mm	65 mm	16 mm	Blue
EL40PPPNB25	40 mm	70 mm	16 mm	Green

NVENT LENTON BAR END PROTECTOR - BEP

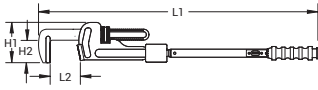


- Easy to install and remove
- Color coded for the appropriate reinforcing bar size

Catalog Number	Article Number	Rebar Size, Metric	Color
EL10BTP	370000	10 mm	Yellow
EL12BTP	370010	12 mm	Red
EL14BTP	370020	14 mm	Green
EL16BTP	370060	16 mm	Black
EL18BTP	370130	18 mm	White
EL20BTP	370070	20 mm	Yellow
EL22BTP	370140	22 mm	Blue
EL25BTP	370080	25 mm	Red
EL28BTP	370090	28 mm	Black
EL30BTP	370100	30 mm	White
EL32BTP	370150	32 mm	Yellow
EL34BTP	370160	34 mm	Red
EL36BTP	370110	36 mm	Blue
EL38BTP	370170	38 mm	White
EL40BTP	370120	40 mm	Green
EL50BTP	370190	50 mm	Black

nVent LENTON Taper-Threaded Accessories

NVENT LENTON INSPECTION WRENCH



- All wrenches are marked with unique serial numbers
- Setting of torque values is simple
- Used on multiple bar sizes

Catalog Number	Article Number	Torque TQ	Rebar Size, Metric	Length 1 L1	Length 2 L2	Height 1 H1	Height 2 H2	Unit Weight
148010	148010	270 N·m Max	10 – 28 mm	630 mm	60 mm Max	75 mm	40 mm	2.5 kg
148030	148030	350 N·m Max	20 – 57 mm	825 mm	80 mm Max	90 mm	45 mm	3.7 kg

A Look at nVent LENTON Concrete Reinforcement Products



nVent LENTON products for every application including: standard steel, durability coatings, stainless steel, cryogenic, corrosion resistant, and more.

WARNING

nVent products shall be installed and used only as indicated in nVent's product instruction sheets and training materials. Instruction sheets are available at nVent.com/LENTON and from your nVent customer service representative. Improper installation, misuse, misapplication or other failure to completely follow nVent's instructions and warnings may cause product malfunction, property damage, serious bodily injury and/or death, and void your warranty.



ACI is a registered trademark of the American Concrete Institute.

ASTM is a registered trademark of ASTM International.

IAPMO is a registered trademark of the International Association of Plumbing & Mechanical Officials.

IBC and ICC are registered trademarks of the International Code Council.

UBC (Uniform Building Code) is a registered trademark of the International Conference of Building Officials.

We reserve the right to make any alterations to the information contained in this brochure which we consider to be either necessary or advantageous. This brochure is designed to provide only preliminary information on the products and is not a contract. The Company does not accept any liability for loss or damage arising from failure to follow its instructions to products not agreed by it.

nVent LENTON is a world leader in advanced mechanical rebar splicing systems. Our Rebar Splicing Specialists understand the reinforced concrete business and inherent rebar splicing challenges on today's job sites. nVent LENTON offers a wide range of Mechanical Splices for a wide variety of construction needs:

- nVent LENTON Taper-Threaded Splicing Systems – Ideal alternative to conventional lap splices
- Mechanical Anchors including nVent LENTON Terminator – Ideal alternative to hooked rebar anchorage
- nVent LENTON Ultimate Splicing Systems and Terminators – Ideal for high-strain, fatigue and nuclear performance requirements
- nVent LENTON Interlok Grout-Filled Precast Splicing System – Ideal for precast structures
- nVent LENTON Quick Wedge Lap Splicing System – Ideal for retrofit
- nVent LENTON Speed Sleeve Compression-Only Splices – Ideal for compression situations
- nVent LENTON Cadweld – Premier mechanical splicing system
- nVent LENTON Connect Shear Bolt Splicing System – Ideal for in-situ construction
- nVent LENTON Swaged Terminator – Ideal Alternative for high-volume anchors

As your rebar splicing specialist, nVent LENTON offers you the expertise you need for all your rebar splicing projects.

nVent Engineered Electrical & Fastening Solutions is a leading global manufacturer and marketer of superior engineered products for niche electrical, mechanical and concrete applications. These nVent products are sold globally under a variety of market-leading brands: nVent ERICO welded electrical connections, facility electrical protection, and rail and industrial products; nVent CADDY fixing, fastening and support products; nVent ILSCO low voltage power and grounding connections; and nVent LENTON engineered systems for concrete reinforcement. For more information on nVent ERICO, CADDY, ILSCO and LENTON, please visit nVent.com/LENTON.







North America

Tel +1.800.248.2677

LENTON-OrderSupportEast@nVent.com

LENTON-OrderSupportWest@nVent.com

Europe

Tel +311.35835100

lentonspecialistemea@nVent.com

Middle East

Tel +971.506.255.903

Africa

Tel +31.13.5385.440

Asia Pacific

Tel +61.2.9751.8500

Latin America

Tel +55.3686-9785

LA-cotizaciones@nVent.com

Australia

Tel +61.2.9751.8500

ausorders@nVent.com



Our powerful portfolio of brands:

CADDY

ERICO

HOFFMAN

ILSCO

SCHROFF

TRACHTE