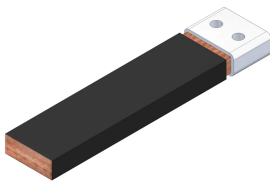


# FleXbus Conductor, 1,810 mm<sup>2</sup>, 13,000 mm x 50 mm x 50 mm x 30 mm x 101 kg

## Data Solutions

### KATALOGNUMMER

**FLEXCOND1810L13**



nVent ERIFLEX FleXbus Conductor is ready-to-use from one side with direct connection to busbar or circuit-breaker palm. It is an innovative and patented connection solution between two pieces of electrical equipment (such as a transformer, switchboard or generator). FleXbus Advanced maintains a high level of reliability and creates an easy and customizable connection on-site without additional design study, specific specialized workforce or expensive tools. The FleXbus Conductor is insulated with a low-smoke, halogen-free, flame-retardant (LSHFRR), high-temperature and class II material. FleXbus Conductor is a flexible, copper-plated, aluminum flat braid with insulation available from 2 to 25 meters length and under different cross section for 500A to 6300A applications. It allows for connection from the power supply to switchgear with only one conductor per phase up to 1600kVA and with two conductors per phase up to 3150kVA.

### CERTIFIERINGAR



### DESIGN

Flexible insulated copper-plated, aluminum flat braid

Better current/ampacity than cable due to skin effect

Much more flexible than cable

No bending radius to respect

Ready-to-use from one side with direct connection on busbar or circuit breaker palm

Only one conductor per phase from 400kVA (560 A) to 1600kVA (2250 A) and two conductors per phase for 2000kVA (2800 A) to 3150kVA (4435 A)

## PRODUKTATTRIBUT

---

Artikelnummer: 508322

Tvårsnitt: 1810mm<sup>2</sup>

Längd 1 (L1): 13000mm

Längd 2 (L2): 100mm

Ledarmaterial: Kopparpläterat aluminium

Kontaktfinish: Förtentat

Kontaktmaterial: Koppar

Isoleringsförlängning: 500% min

Isolationstjocklek: 2.5 – 3.5mm

Dielektrisk styrka: 20kV/mm

Brandklassning: UL® 94V-0

Halogenfri klassning: UL® 2885; IEC® 60754-1; IEC® 62821-2

Lågt rökvärde: IEC® 61034-2; ISO 5659-2; UL® 2885

Mekanisk resistensklassificering: IK09

UV-resistensgrad: UL® 2556; UL® 854

Kabeldiameter: 0.2mm

Nominell spänning, IEC: 1000V; 1500V

Max. arbetsspänning, EN 50264-3-1: 6000V

Arbetstemperatur: -50 to 115°C

Uppfyller: IEC® 60695-2-11 (glödtrådstest 960 °C); IEC® 61439.1; IEC® 61439.1, klass II; IEC® 60364

ΔT 60 K: 2356A

Bredd 1 (W1): 108mm

Bredd 2 (W2): 110mm

Höjd 1 (H1): 39.7mm

Höjd 2 (H2): 25mm

Hålstorlek (HS): 14mm

Enhetsvikt: 100.8kg

A.: 50mm

B.: 50mm

C.: 25mm

D.: 30mm

2 bar strömkoeficient, icke-symmetrisk: 1.48

2 bar strömkoeficient, symmetrisk: 2

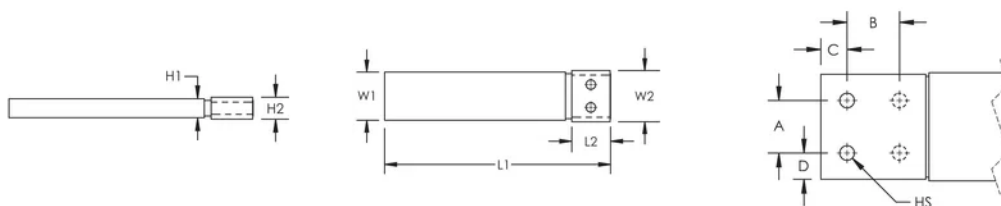
Installationsstandard: AS 3008; BS 7671; CEI 64-8; CSN; DIN VDE 0100; HD 384; IEC® 60364; NBR 5410; NEN 1010; NFC 15-100; NIBT-NIN; NP (2002); ÖNORM; REBT; RGIE-AREI

## YTTERLIGARE PRODUKTINFORMATION

Optional extender available for more connection possibilities.

Current Coefficient According to Temperature Rise								
Temperature Rise	$\Delta T$ 30°C	$\Delta T$ 40°C	$\Delta T$ 45°C	$\Delta T$ 50°C	$\Delta T$ 55°C	$\Delta T$ 60°C	$\Delta T$ 65°C	$\Delta T$ 70°C
Derating Coefficient	0.71	0.82	0.87	0.91	0.96	1.00	1.04	1.08

## DIAGRAMS



## VARNING

nVent produkter ska installeras och användas endast så som anges i nVents bruksanvisning och utbildningsmaterial. Bruksanvisningar är tillgängliga på [www.nvent.com](http://www.nvent.com) och från din nVent kundtjänstrepresentant. Felaktig installation, missbruk, felapplicering eller annan brist i att helt följa nVents instruktioner och varningar kan orsaka att produkten brister, egendomsskador, allvarliga kroppsskador och dödsfall och/eller ogiltigförklara din garanti.



Vårt starka utbud av varumärken:

**CADDY ERICO HOFFMAN ILSCO SCHROFF TRACHTE**