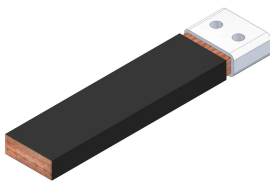


FleXbus Conductor Rep, 360 mm², 11000 mm x 25 mm x 12,5 mm x 20,3 kg

Data Solutions

KATALOGNUMMER

FLEXCORE360L11



The nVent ERIFLEX FleXbus Conductor with Rodent and Termite Repellent is designed for easy, one-sided use with a direct connection to a busbar or circuit-breaker palm. This innovative and patented solution provides a reliable connection between two pieces of electrical equipment, such as a transformer, switchboard, or generator. The FleXbus Advanced solution ensures high reliability and offers a customizable on-site connection without the need for additional design studies, specialized workforce, or expensive tools. The FleXbus Conductor is insulated with a low-smoke, halogen-free, flame-retardant (LSHFRR), high-temperature, and class II material. It is a flexible, copper-plated, aluminum flat braid available in lengths from 2 to 25 meters and in various cross sections for 500A to 6300A applications. This conductor allows for connection from the power supply to switchgear with only one conductor per phase up to 1600kVA and with two conductors per phase up to 3150kVA.

CERTIFIERINGAR



DESIGN

Flexible, insulated, copper-plated aluminum flat braid

Better current/ampacity compared to cable due to the skin effect

Significantly more flexible than cable

No need to adhere to a bending radius

Ready-to-use from one side with a direct connection to a busbar or circuit breaker palm

Requires only one conductor per phase for 400kVA (560 A) to 1600kVA (2250 A) and two conductors per phase for 2000kVA (2800 A) to 3150kVA (4435 A)

Insulation sleeve contains a special additive that makes the Flexbus conductor resistant to rodents and termites

PRODUKTATTRIBUT

Artikelnummer: 508433

Tvårsnitt: 360mm²

Längd 1 (L1): 11000mm

Längd 2 (L2): 50mm

Ledarmaterial: Kopparpläterat aluminium

Isoleringsmaterial: Termoplastiska elastomer

Rått- och termitsäker: Testad i enlighet med GB/T 34016-2017 och DIN EN 117

Kontaktfinish: Förtentat

Kontaktmaterial: Koppar

Isoleringsförlängning: 500% min

Isolationstjocklek: 2.5 – 3.5mm

Halogenfri klassning: UL® 2885; IEC® 60754-1; IEC® 62821-2

Mekanisk resistensklassificering: IK09

UV-resistensgrad: UL® 2556; UL® 854

Lågt rökvärde: IEC® 61034-2; ISO 5659-2; UL® 2885

Dielektrisk styrka: 20kV/mm

Brandklassning: UL® 94V-0

Kabeldiameter: 0.2mm

Nominell spänning, IEC: 1000V; 5000V

Max. arbetsspänning, EN 50264-3-1: 6000V

Arbetstemperatur: -50 to 115°C

Uppfyller: IEC® 60695-2-11 (glödtrådstest 960 °C); IEC® 61439.1; IEC® 61439.1, klass II; IEC® 60364

ΔT 60 K: 901A

Bredd 1 (W1): 58mm

Bredd 2 (W2): 50mm

Höjd 1 (H1): 21.7mm

Höjd 2 (H2): 12.3mm

Hålstorlek (HS): 11mm

Enhetsvikt: 20.2kg

A.: 25mm

C.: 25mm

D.: 12.5mm

2 bar strömkoeficient, icke-symmetrisk: 1.52

2 bar strömoefficient, symmetrisk: 2

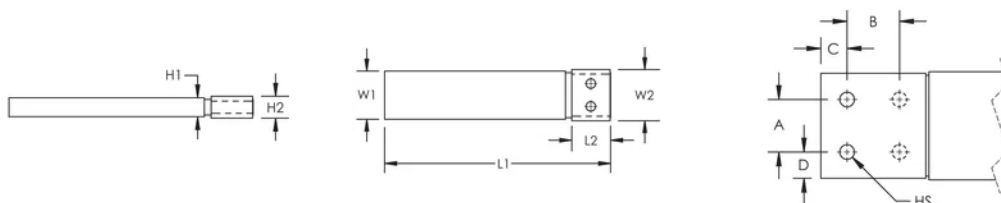
Installationsstandard: AS 3008; BS 7671; CEI 64-8; CSN; DIN VDE 0100; HD 384; IEC® 60364; NBR 5410; NEN 1010; NFC 15-100; NIBT-NIN; NP (2002); ÖNORM; REBT; RGIE-AREI

YTTERLIGARE PRODUKTINFORMATION

Optional extender available for more connection possibilities.

Current Coefficient According to Temperature Rise								
Temperature Rise	ΔT 30°C	ΔT 40°C	ΔT 45°C	ΔT 50°C	ΔT 55°C	ΔT 60°C	ΔT 65°C	ΔT 70°C
Derating Coefficient	0.71	0.82	0.87	0.91	0.96	1.00	1.04	1.08

DIAGRAMS



VARNING

nVent produkter ska installeras och användas endast så som anges i nVents bruksanvisning och utbildningsmaterial. Bruksanvisningar är tillgängliga på www.nvent.com och från din nVent kundtjänstrepresentant. Felaktig installation, missbruk, felapplicering eller annan brist i att helt följa nVents instruktioner och varningar kan orsaka att produkten brister, egendomsskador, allvarliga kroppsskador och dödsfall och/eller ogiltigförklara din garanti.



Vårt starka utbud av varumärken:

CADDY ERICO HOFFMAN ILSCO SCHROFF TRACHTE