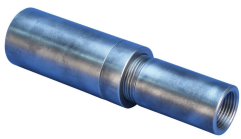


# P14 Position Transition Coupler, Worldwide Design, 34 mm, 22 mm

???

## EL3422P14LN



??



??

Used to splice different diameter bars

Designed to splice two curved, bent or straight bars, when neither bar can be rotated and where the ongoing bar is free to move in its axial direction

????

??: ?

??: ??

????: ??????????????

?????: 34 mm; 22 mm

?? (Ø): 60 mm

?? 1 (L1): 213 mm

?? 2 (L2): 224 mm

?? 1 (BD1): 55mm

?? 2 (BD2): 37mm

??? 1 (BG1): 136mm

??? 2 (BG2): 147mm

???? (CB): 107mm

????: 3.51 kg

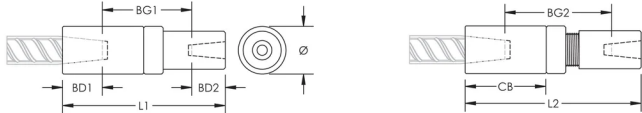
????: AASHTO;ABNT NBR 8548:1984;ACI 318 1 ??125% ??????;ACI 318 2 ??????;ACI 349;ACI 359;AS3600

????: 6

??????

Bar dimensions and weights listed may vary by region. Coupler sizes not shown may be available by special order. Contact your nVent LENTON representative for more information.

?



??

???? nVent ????????????????? nVent ??????? www.nvent.com ??????????? nVent ????????????????????????????????????? nVent ?????????????????????????????????????/?????????????

??  
+1.800.753.9221  
?? 1 ?????  
?? 2 ?????

??  
???  
+31 800-0200135  
???  
+33 800 901 793

??  
???  
800 1890272  
????/???  
+31 13 5835404

????  
???  
+ 86 21 2412 1618/19  
???  
+61 2 9751 8500



??????????:

CADDY ERICO HOFFMAN ILSCO SCHROFF TRACHTE