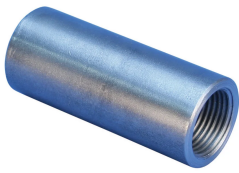


# A2 Standard Coupler, Plain, 36 mm, #11, 35M

???

## EL36A2N



??

Designed to splice the same diameter bars where the second bar can be rotated and is not restricted in its axial direction

Slim design maintains concrete cover

Installs quickly and easily

????

??: ?

??: ??

?????: ??

?????: 36 mm

?????: #11

?????: 35M

?? (Ø): 50 mm

?? (L): 102mm

?? (BD): 43mm

?? (BG): 16mm

????: 0.99 kg

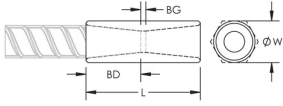
????: AASHTO;ABNT NBR 8548:1984;ACI 318 1 ??125% ??????;ACI 318 2 ?????????;ACI 349;ACI 359;AS3600

????: 16

??????

Bar dimensions and weights listed may vary by region. Coupler sizes not shown may be available by special order. Contact your nVent LENTON representative for more information.

?



??

??? nVent ?????????????? nVent ??????? www.nvent.com ?????????? nVent ?????????????????????????????????????? nVent  
??

??  
+1.800.753.9221  
?? 1 ?????  
?? 2 ?????

??  
???  
+31 800-0200135  
???  
+33 800 901 793

??  
???  
800 1890272  
????/???  
+31 13 5835404

???  
???  
+ 86 21 2412 1618/19  
???  
+61 2 9751 8500



??????????:

CADDY ERICO HOFFMAN ILSCO SCHROFF TRACHTE