

?? 1 (L1): 5000mm

?? 2 (L2): 75mm

????: ???

????: ???????

???: ?? GB/T 34016-2017 ? DIN EN 117 ???? ?

?????: ??

?????: ?

?????: 500% min

?????: 2.5 – 3.5mm

?????: UL® 2885; IEC® 60754-1; IEC® 62821-2

?????: IK09

?????: UL® 2556; UL® 854

?????: IEC® 61034-2; ISO 5659-2; UL® 2885

?????: 20kV/mm

?????: UL® 94V-0

?????: 0.2mm

?????IEC: 1000V; 5000V

???????EN 50264-3-1: 6000V

?????: ?50 to 115°C

?: IEC® 60695-2-11???????? 960 °C?; IEC® 61439.1; IEC® 61439.1 II ?; IEC® 60364

?T 60 K: 1233A

?? 1 (W1): 58mm

?? 2 (W2): 50mm

?? [1] (H1): 31.15mm

?? [2] (H2): 21.3mm

??? (HS): 11mm

????: 14.7kg

A: 25mm

B: 25mm

C: 25mm

D: 12.5mm

2 ??????????: 1.51

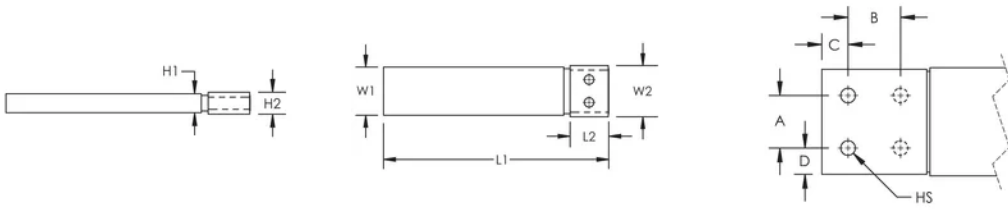
2 ??????????: 2

?????: AS 3008; BS 7671; CEI 64-8; CSN; DIN VDE 0100; HD 384; IEC® 60364; NBR 5410; NEN 1010; NFC 15-100; NIBT-NIN; NP (2002); ÔNORM; REBT; RGIE-AREI

??????

????????????????????

??	?T 30°C	?T 40°C	?T 45°C	?T 50°C	?T 55°C	?T 60°C	?T 65°C	?T 70°C
????	0.71	0.82	0.87	0.91	0.96	1.00	1.04	1.08



??? nVent ?????????????????? nVent ??????? www.nvent.com ?????????????? nVent ?? nVent
 ???



??????????:
 CADDY ERICO HOFFMAN ILSCO SCHROFF TRACHTE