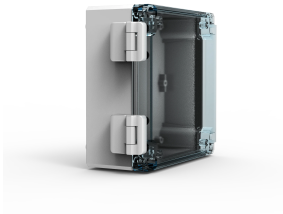


Hinges, DSHI

The cover can be opened quickly, and the risk of losing it becomes non-existent when using hinges on terminal boxes.



??

Description: Using this accessory the cover can be hinged. Machining is required.

Material: Polycarbonate.

Finish: RAL 7035.

Pack quantity: Set of 2 hinges with mounting accessories.

The cover on terminal boxes can be opened quickly while maintaining contact

Maintenance operations can be performed easily without the risk of losing the terminal box's cover

Terminal boxes require machining before the hinges can be mounted

