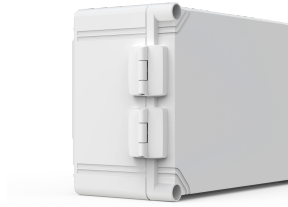


Hinges, OHI



The cover can be opened quickly, and the risk of losing it becomes non-existent when using hinges on ABS and polycarbonate terminal boxes.

??

Description: Using this accessory the cover can be hinged. Machining is required.

Material: Polycarbonate.

Finish: RAL 7035.

Pack quantity: Set of 2 hinges with mounting accessories.

Maintenance operations can be performed easily without the risk of losing the terminal box's cover

Terminal boxes require machining before the hinges can be mounted

