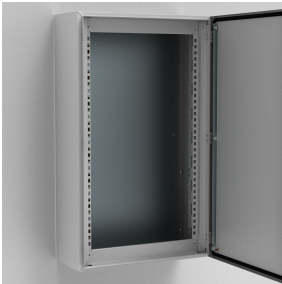


# Modular System Frames For Power Distribution, MSMSM



The mild steel modular system frame for wall mounted enclosures, MSMSM, has two mounting levels. The first is for fixing front panels and the second for mounting equipment. The frame can be equipped before mounting in the enclosure and allows for the use of both modular and non-modular components.

??

**Description:** Two single vertical profiles, which can be used both for front covers and assembly of components. A cost effective solution for panel builders, reducing assembly time, which also enables assembly outside the enclosure. Useful height for front covers is, Height – 100 mm.

**Material:** 1.5 mm steel

**Finish:** RAL 7035

**Pack quantity:** 1 kit

**Mounting requirements:** To be assembled on MAS, ASR and WAS enclosures

The frame provides customers with a cost effective solution for small sized power distribution panels

The frame ensures that both modular and non-modular components can be installed into the same enclosure

Customers can assembly the frame outside of the enclosure, if required, which saves installation time as well as labour cost

**Pack quantity:** 1 kit

