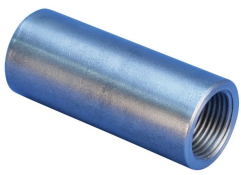


# A2 Standard Coupler, Plain, 32 mm, #10

???

## EL32A2N



??



??

Designed to splice the same diameter bars where the second bar can be rotated and is not restricted in its axial direction

Slim design maintains concrete cover

Installs quickly and easily

????

??: ?

??: ??

?????: ??

?????: 32 mm

?????: #10

?? (Ø): 45 mm

?? (L): 97mm

?? (BD): 40mm

?? (BG): 17mm

????: 0.73 kg

????: AASHTO;ABNT NBR 8548:1984;ACI 318 1 ??125% ??????;ACI 318 2 ??????;ACI 349;ACI 359;AS3600

